

**Catalogue No.**

AB0316-100

**Qty:**

300 µg

## Anti-rpoD

**Source:** Goat

**General description:** Goat polyclonal antibody to RNA polymerase sigma factor rpoD. Sigma factors are initiation factors that promote the attachment of RNA polymerase to specific initiation. rpoD is the primary sigma factor during exponential growth. Preferentially transcribes genes associated with fast growth, such as ribosomal operons, other protein-synthesis related genes, rRNA- and tRNA-encoding genes and prfB.

**Alternative names:** alt, ECK3057 antibody.

**Form:** Polyclonal antibody supplied as a 100 µl (3 mg/ml) aliquot in PBS, 20% glycerol and 0.05% sodium azide. This antibody is epitope-affinity purified from goat antiserum.

**Immunogen:** Recombinant peptide derived from within residues 330 aa to the C-terminus of rpoD (Escherichia) produced in E. coli.

**Specificity:** Detects endogenous levels of rpoD by Western blot.

**Reactivity:** Reacts with Burkholderia, Escherichia and Pseudomonas proteins

Sample	WB	IHC (F)	IHC (P)	IF	ELISA
Escherichia	++	ND	ND	ND	ND
Pseudomonas	+++	ND	ND	ND	ND
Burkholderia	++	ND	ND	ND	ND

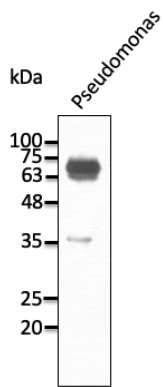
+++ excellent, ++ good, + poor, ND not determined

**Usage:**

WB: 1:500-1:2,000

**Storage:** For continuous use, store at 2-8 C for one-two days. For extended storage, store in -20 C freezer. Working dilution samples should be discarded if not used within 12 hours.

**Special instructions:** The antibody solution should be gently mixed before use..



Anti-rpoD Ab at 1/1,000 dilution; lysates at 50  $\mu$ g per lane; rabbit polyclonal to goat IgG (HRP) at 1/10,000 dilution;

For research use only, not for diagnostic use

**SICGEN's Proprietary Immunogen Policy**

In order to produce high specific antibodies SICGEN has invested a lot of time and effort into selecting immunogen sequences. SICGEN has decided to protect this information by not publishing it on the website. However, these sequences are available on request.