

Catalogue No.

AB0303 -100

Qty:

200 µg

Anti-TUBB

Source: Goat

General description: Goat polyclonal antibody to TUBB. Tubulin beta class I protein forms a dimer with alpha tubulin and acts as a structural component of microtubules. This protein is involved in cortical dysplasia and other, brain malformations.

Alternative names: CDCBM6, CSCSC1, M40, OK/SW-cl.56, TUBB1, tubulin beta class I, TUBB5 antibody.

Form: Polyclonal antibody supplied as a 100 µl (2 mg/ml) aliquot in PBS, 20% glycerol and 0.05% sodium azide. This antibody is epitope-affinity purified from goat antiserum.

Immunogen: Recombinant peptide derived from within residues 345 aa to the C-terminus of human TUBB var1 produced in E. coli.

Specificity: Detects endogenous levels of all variants (var1 52 KDa, var2 49.5 KDa, var3 27.3 KDa, var4 44.8KDa, var5 41.7 KDa, var6 41.7 KDa) of TUBB in different cell lines by Western blot.

Reactivity: Reacts with Human, Rat, Mouse, Monkey and Canine proteins

Sample	WB	IHC (F)	IHC (P)	IF	ELISA
Human	+++	ND	ND	ND	ND
Rat	+++	ND	ND	ND	ND
Mouse	+++	ND	ND	ND	ND
Canine	+++	ND	ND	ND	ND
Monkey	+++	ND	ND	ND	ND

+++ excellent, ++ good, + poor, ND not determined

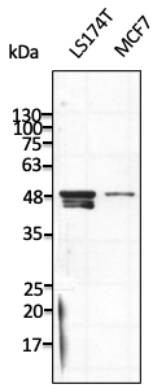
Usage:

WB: 1:500-1:2,000

Storage: For continuous use, store at 2-8 C for one-two days. For extended storage, store in -20 C freezer.

Working dilution samples should be discarded if not used within 12 hours.

Special instructions: The antibody solution should be gently mixed before use..



Anti-TUBB Ab at 1/1,000 dilution; lysates at 50 μ g per lane; rabbit polyclonal to goat IgG (HRP) at 1/10,000 dilution;

For research use only, not for diagnostic use

SICGEN's Proprietary Immunogen Policy

In order to produce high specific antibodies SICGEN has invested a lot of time and effort into selecting immunogen sequences. SICGEN has decided to protect this information by not publishing it on the website. However, these sequences are available on request.