

Catalogue No.

AB0283-100

Qty:

300 µg

Anti-STUB1

Source: Goat

General description: Goat polyclonal antibody to STUB1. STUB1 protein containing tetratricopeptide repeat and a U-box that functions as a ubiquitin ligase/cochaperone. It binds to and ubiquitinates shock cognate 71 kDa protein (Hspa8) and DNA polymerase beta (Polb), among other targets.

Alternative names: CHIP, HSPABP2, NY-CO-7, SCAR16, SDCCAG7, STIP1 homology and U-box containing protein 1, UBOX1 antibody.

Form: Polyclonal antibody supplied as a 100 µl (3 mg/ml) aliquot in PBS, 20% glycerol and 0.05% sodium azide. This antibody is epitope-affinity purified from goat antiserum

Immunogen: Purified recombinant human STUB1 protein produced in E. coli.

Specificity: Detects endogenous levels of STUB1 by Western blot.

Reactivity: Reacts with Human, Rat, Mouse, Monkey and Canine proteins

Sample	WB	IHC (F)	IHC (P)	IF	ELISA
Human	+++	+++	+++	ND	ND
Rat	+++	+++	+++	ND	ND
Mouse	+++	+++	+++	ND	ND
Canine	+++	+++	+++	ND	ND
Monkey	+++	+++	+++	ND	ND

+++ excellent, ++ good, + poor, ND not determined

Usage:

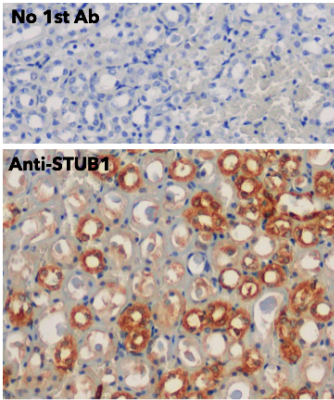
WB: 1:500-1:5,000

IHC (F): 1:250-1:1,000

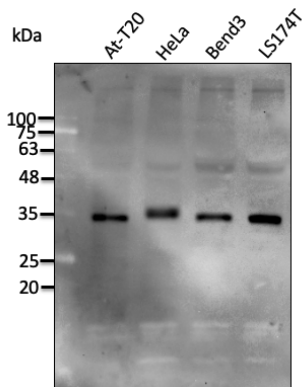
IHC (P): 1:250-1:1,000

Storage: For continuous use, store at 2-8 C for one-two days. For extended storage, store in -20 C freezer. Working dilution samples should be discarded if not used within 12 hours.

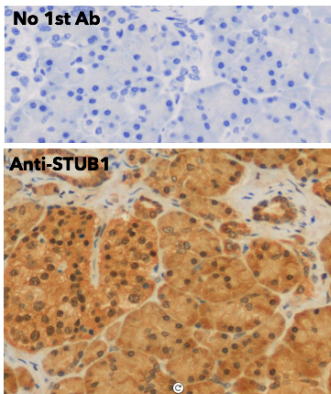
Special instructions: The antibody solution should be gently mixed before use..



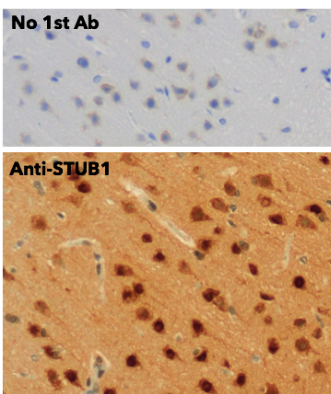
IHC of mouse kidney using anti-STUB1 antibody and FFPE tissue after heat-induced antigen retrieval. Anti-STUB1 Ab at 1:750/DAB detection;



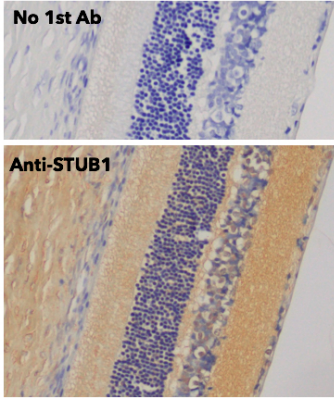
Anti-STUB1 Ab at 1/2,500 dilution; lysates at 50 µg per lane; rabbit polyclonal to goat IgG (HRP) at 1/10,000 dilution;



IHC of human pancreas using anti-STUB1 antibody and FFPE tissue after heat-induced antigen retrieval. Anti-STUB1 Ab at 1:750/DAB detection;



IHC of mouse brain using anti-STUB1 antibody and FFPE tissue after heat-induced antigen retrieval. Anti-STUB1 Ab at 1:750/DAB detection;



IHC of rat retina using anti-STUB1 antibody and FFPE tissue after heat-induced antigen retrieval. Anti-STUB1 Ab at 1:750/DAB detection;

For research use only, not for diagnostic use

SICGEN's Proprietary Immunogen Policy

In order to produce high specific antibodies SICGEN has invested a lot of time and effort into selecting immunogen sequences. SICGEN has decided to protect this information by not publishing it on the website. However, these sequences are available on request.