

Catalogue No.

AB0279-100

Qty:

200 µg

Anti-HSV tag

Source: Goat

General description: Goat polyclonal antibody to HSV epitope. The HSV (herpes simplex virus) tag is derived from the envelope glycoprotein D and it is frequently engineered onto the N- or C- terminus of a protein of interest so that the tagged protein can be visualized and analyzed by immunochemical methods.

Alternative names: HSV tag antibody.

Form: Polyclonal antibody supplied as a 100 µl (2 mg/ml) aliquot in PBS, 20% glycerol and 0.05% sodium azide. This antibody is epitope-affinity purified from goat antiserum.

Immunogen: Purified recombinant peptide QPELAPEDPED produced in E. coli.

Specificity: Reacts specifically with HSV-tagged recombinant fusion proteins expressed in transfected mammalian cells or produced by in vitro translation.

Reactivity: Reacts with Transfected cells proteins

Sample	WB	IHC (F)	IHC (P)	IF	ELISA
Transfected cells	+++	ND	ND	ND	ND

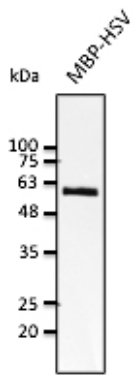
+++ excellent, ++ good, + poor, ND not determined

Usage:

WB: 1:500-1:5,000

Storage: For continuous use, store at 2-8 C for one-two days. For extended storage, store in -20 C freezer. Working dilution samples should be discarded if not used within 12 hours.

Special instructions: The antibody solution should be gently mixed before use..



Anti-HSV Ab at 1/2,500 dilution; lysates at 20 ng of protein per lane; rabbit polyclonal to goat IgG (HRP) at 1/10,000 dilution;

For research use only, not for diagnostic use

SICGEN's Proprietary Immunogen Policy

In order to produce high specific antibodies SICGEN has invested a lot of time and effort into selecting immunogen sequences. SICGEN has decided to protect this information by not publishing it on the website. However, these sequences are available on request.