

Catalogue No.

AB0277-100

Qty:

300 µg

Anti-NPY1R

Source: Goat

General description: Goat polyclonal antibody to NPY1R. This protein belongs to the G-protein-coupled receptor superfamily. It is a transmembrane protein that mediates the function of neuropeptide Y (NPY), a neurotransmitter, and peptide YY (PYY), a gastrointestinal hormone. Activation of Y1 receptors may result in mobilization of intracellular calcium and inhibition of adenylate cyclase activity.

Alternative names: neuropeptide Y receptor Y1, NPYR, NPY1-R antibody.

Form: Polyclonal antibody supplied as a 100 µl (3 mg/ml) aliquot in PBS, 20% glycerol and 0.05% sodium azide. This antibody is epitope-affinity purified from goat antiserum.

Immunogen: Purified recombinant peptide derived from within residues 300 aa to the C-terminus of human NPY1R produced in E. coli.

Specificity: Detects endogenous levels of NPY1R by Western blot.

Reactivity: Reacts with Human, Rat, Mouse, Monkey and Canine proteins

Sample	WB	IHC (F)	IHC (P)	IF	ELISA
Human	+++	ND	ND	ND	ND
Rat	+++	ND	ND	ND	ND
Mouse	+++	ND	ND	ND	ND
Canine	+++	ND	ND	ND	ND
Monkey	+++	ND	ND	ND	ND

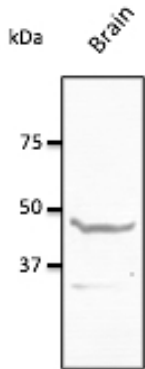
+++ excellent, ++ good, + poor, ND not determined

Usage:

WB: 1:500-1:5,000

Storage: For continuous use, store at 2-8 C for one-two days. For extended storage, store in -20 C freezer. Working dilution samples should be discarded if not used within 12 hours.

Special instructions: The antibody solution should be gently mixed before use..



Anti-NPY1R Ab at 1/1,000 dilution; lysate at 50 µg per lane; rabbit polyclonal to goat IgG (HRP) at 1/10,000 dilution;

For research use only, not for diagnostic use

SICGEN's Proprietary Immunogen Policy

In order to produce high specific antibodies SICGEN has invested a lot of time and effort into selecting immunogen sequences. SICGEN has decided to protect this information by not publishing it on the website. However, these sequences are available on request.