

Catalogue No.

AB0272-100

Qty:

300 µg

Anti-CD5

Source: Goat

General description: Goat polyclonal antibody to CD5. This protein is a member of the scavenger receptor cysteine-rich (SRCR) superfamily. Members of this family are membrane-anchored proteins or secreted mainly found in cells (thymocytes, T lymphocytes and a subset of B lymphocytes) associated with the immune system.

Alternative names: LEU1, T1 antibody.

Form: Polyclonal antibody supplied as a 100 µl (3 mg/ml) aliquot in PBS, 20% glycerol and 0.05% sodium azide. This antibody is epitope-affinity purified from goat antiserum.

Immunogen: Recombinant peptide derived from within residues 105-210 aa of human CD5 produced in E. coli.

Specificity: Detects endogenous levels of CD5 by Western blot.

Reactivity: Reacts with Human, Rat, Mouse, Monkey and Canine proteins

Sample	WB	IHC (F)	IHC (P)	IF	ELISA
Human	+++	+++	+++	ND	ND
Rat	+++	+++	+++	ND	ND
Mouse	+++	+++	+++	ND	ND
Canine	+++	+++	+++	ND	ND
Monkey	+++	+++	+++	ND	ND

+++ excellent, ++ good, + poor, ND not determined

Usage:

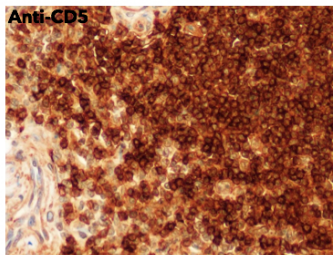
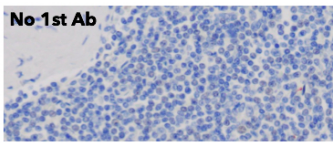
WB: 1:500-1:2,000

IHC (F): 1:250-1:1,000

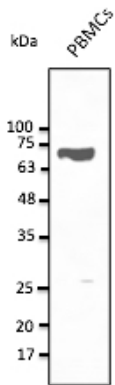
IHC (P): 1:250-1:1,000

Storage: For continuous use, store at 2-8 C for one-two days. For extended storage, store in -20 C freezer. Working dilution samples should be discarded if not used within 12 hours.

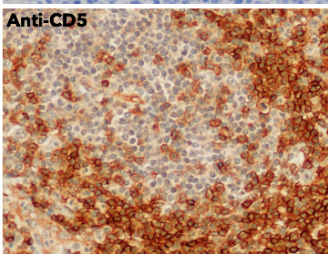
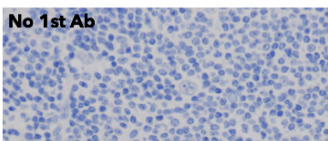
Special instructions: The antibody solution should be gently mixed before use..



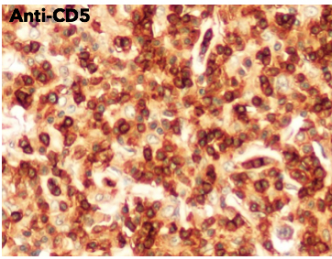
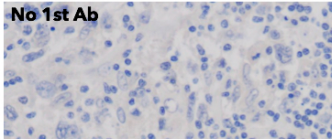
IHC of mouse spleen using anti-CD5 antibody and FFPE tissue after heat-induced antigen retrieval. Anti-CD5 Ab at 1:750/DAB detection;



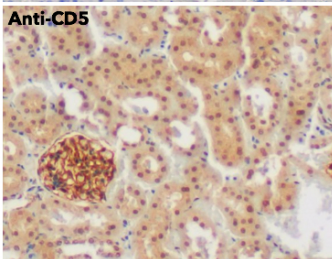
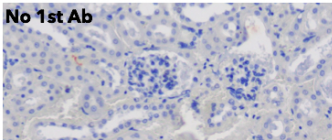
Anti-CD5 Ab at 1/1,000 dilution; lysates at 50 µg per lane; rabbit polyclonal to goat IgG (HRP) at 1/10,000 dilution;



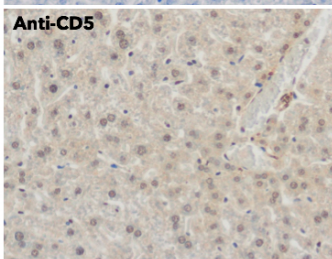
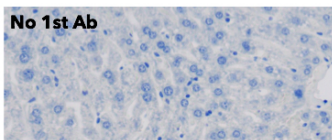
IHC of human appendix using anti-CD5 antibody and FFPE tissue after heat-induced antigen retrieval. Anti-CD5 Ab at 1:750/DAB detection;



IHC of human lymph node using anti-CD5 antibody and FFPE tissue after heat-induced antigenretrieval. Anti-CD5 Ab at 1:750/DAB detection;



IHC of mouse kidney using anti-CD5 antibody and FFPE tissue after heat-induced antigen retrieval. Anti-CD5 Ab at 1:750/DAB detection;



IHC of mouse liver using anti-CD5 antibody and FFPE tissue after heat-induced antigen retrieval. Anti-CD5 Ab at 1:750/DAB detection;

For research use only, not for diagnostic use

SICGEN's Proprietary Immunogen Policy

In order to produce high specific antibodies SICGEN has invested a lot of time and effort into selecting immunogen sequences. SICGEN has decided to protect this information by not publishing it on the website. However, these sequences are available on request.