

**Catalogue No.**

AB0235-100

**Qty:**

300 µg

## Anti-beta-Lactoglobulin

**Source:** Goat

**General description:** Goat polyclonal antibody to  $\beta$ -Lactoglobulin.  $\beta$ -Lactoglobulin is a small protein of 162 amino acids with a molecular mass of 18,400 Da and a member of the lipocalin family. This protein is the major whey protein of cow and other ruminants. No clear function has been identified for  $\beta$ -lactoglobulin. Although it binds to several hydrophobic molecules, suggesting its role in their transport. There is also a strong suggestion that the molecule exists primarily as a food source.

**Alternative names:** Beta-LG, LGB, MBLG, PAEP, progesterone-associated endometrial protein antibody.

**Form:** Polyclonal antibody supplied as a 100 µl (3 mg/ml) aliquot in PBS, 20% glycerol and 0.05% sodium azide. This antibody is epitope-affinity purified from goat antiserum.

**Immunogen:** Purified beta-Lactoglobulin from bovine milk (>90% by SDS-PAGE). Contains beta-lactoglobulins A and B.

**Specificity:** Using purified protein and milk extract detects a band of 18.5 kDa by Western blot.

**Reactivity:** Reacts with Bovine proteins

Sample	WB	IHC (F)	IHC (P)	IF	ELISA
Bovine	+++	ND	ND	ND	ND

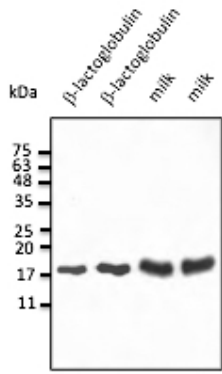
+++ excellent, ++ good, + poor, ND not determined

**Usage:**

WB: 1:500-1:2,000

**Storage:** For continuous use, store at 2-8 C for one-two days. For extended storage, store in -20 C freezer. Working dilution samples should be discarded if not used within 12 hours.

**Special instructions:** The antibody solution should be gently mixed before use..



Anti-b-lactoglobulin Ab at 2,500 dilution; 50-75 ng of protein and 50-100  $\mu$ g of dry milk per lane; rabbit polyclonal to goat IgG (HRP) at 1/10,000 dilution;

For research use only, not for diagnostic use

#### SICGEN's Proprietary Immunogen Policy

In order to produce high specific antibodies SICGEN has invested a lot of time and effort into selecting immunogen sequences. SICGEN has decided to protect this information by not publishing it on the website. However, these sequences are available on request.