

Catalogue No.

AB0197-200

Qty:

600 µg

Anti-Pepsin

Source: Goat

General description: Polyclonal antibody to Pepsin. Pepsin is a 35 kDa protease with a broad specificity. In the stomach and under acid environment, pepsinogen released by chief cells is converted into pepsin that is the active form of the enzyme.

Alternative names: Pepsin A, pepsinogen A, pepsinogen 3, group I, pepsinogen 4 - group I, pepsinogen 5 - group I, PGA, PGA3, PGA4, PGA5 antibody.

Form: Polyclonal antibody supplied as a 200 µl (3 mg/ml) aliquot in PBS, 20% glycerol and 0.05% sodium azide. This antibody is epitope-affinity purified from goat antiserum.

Immunogen: Purified full length native protein isolated from stomach.

Specificity: Using pepsin protein gives a positive signal by Western blot.

Reactivity: Reacts with Human, Rat, Mouse, Monkey and Canine proteins

Sample	WB	IHC (F)	IHC (P)	IF	ELISA
Human	+++	ND	ND	ND	ND
Rat	+++	ND	ND	ND	ND
Mouse	+++	ND	ND	ND	ND
Canine	+++	ND	ND	ND	ND
Monkey	+++	ND	ND	ND	ND

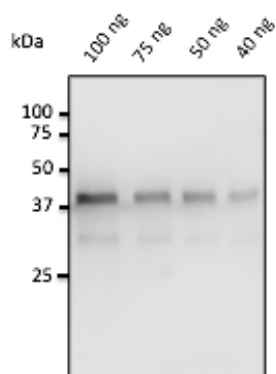
+++ excellent, ++ good, + poor, ND not determined

Usage:

WB: 1:500-1:2,000

Storage: For continuous use, store at 2-8 C for one-two days. For extended storage, store in -20 C freezer. Working dilution samples should be discarded if not used within 12 hours.

Special instructions: The antibody solution should be gently mixed before use..



Anti-Pepsin Ab at 1/500 dilution; 40-100 ng of pepsin isolated from porcine gastric mucosa; rabbit polyclonal to goat IgG (HRP) at 1/10,000 dilution;

For research use only, not for diagnostic use

SICGEN's Proprietary Immunogen Policy

In order to produce high specific antibodies SICGEN has invested a lot of time and effort into selecting immunogen sequences. SICGEN has decided to protect this information by not publishing it on the website. However, these sequences are available on request.