

Catalogue No.

AB0173-100

Qty:

300 µg

anti-IL10

Source: Goat

General description: Goat polyclonal to IL10. IL10 is a cytokine produced primarily by monocytes and to a lesser extent by lymphocytes. It is involved in inflammation and immunoregulation. It down-regulates the expression of MHC class II antigens and Th1 cytokines on macrophages. It also enhances B cell survival, proliferation, and antibody production.

Alternative names: CSIF, GVHDS, IL-10, interleukin 10, IL10A, TGIF antibody.

Form: Polyclonal antibody supplied as a 100 µl (3 mg/ml) aliquot in PBS, 20% glycerol and 0.05% sodium azide. This antibody is epitope-affinity purified from goat antiserum.

Immunogen: Purified recombinant human IL10 produced in E. coli.

Specificity: Detects endogenous levels of total IL10 by Western blot in whole cell and tissue lysates.

Reactivity: Reacts with Human, Rat, Mouse, Monkey and Canine proteins

Sample	WB	IHC (F)	IHC (P)	IF	ELISA
Human	+++	+++	+++	ND	ND
Rat	+++	+++	+++	ND	ND
Mouse	+++	+++	+++	ND	ND
Canine	+++	+++	+++	ND	ND
Monkey	+++	+++	+++	ND	ND

+++ excellent, ++ good, + poor, ND not determined

Usage:

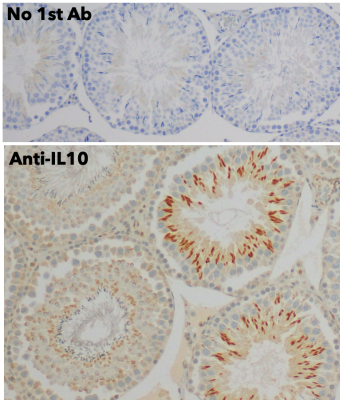
WB: 1:250-1:5,000

IHC (F): 1:250-1:1,000

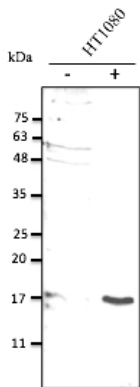
IHC (P): 1:250-1:1,000

Storage: For continuous use, store at 2-8 C for one-two days. For extended storage, store in -20 C freezer. Working dilution samples should be discarded if not used within 12 hours.

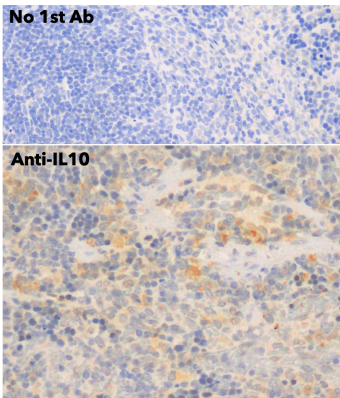
Special instructions: The antibody solution should be gently mixed before use..



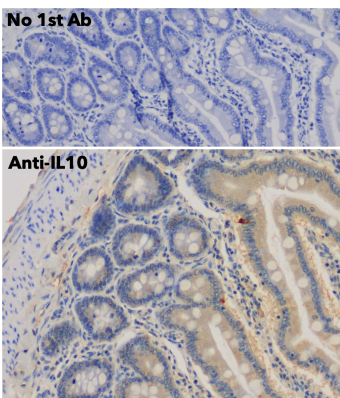
IHC of mouse testis using anti-IL10 antibody and FFPE tissue after heat-induced antigen retrieval. Anti-IL10 Ab at 1:750/DAB detection;



Anti-IL10 Ab at 1/2,500 dilution; 50 µg of total protein lysate per lane; cells were stimulated with inactivated E. coli; rabbit polyclonal to goat IgG (HRP) at 1/10,000 dilution;



IHC of mouse spleen using anti-IL10 antibody and FFPE tissue after heat-induced antigen retrieval. Anti-IL10 Ab at 1:750/DAB detection;



IHC of mouse intestine using anti-IL10 antibody and FFPE tissue after heat-induced antigen retrieval. Anti-IL10 Ab at 1:750/DAB detection;

For research use only, not for diagnostic use

SICGEN's Proprietary Immunogen Policy

In order to produce high specific antibodies SICGEN has invested a lot of time and effort into selecting immunogen sequences. SICGEN has decided to protect this information by not publishing it on the website. However, these sequences are available on request.