

**Catalogue No.**

AB0159-200

**Qty:**

600 µg

## Anti-INS

**Source:** Goat

**General description:** Goat polyclonal to Insulin. Insulin is a 6 kDa peptide, first synthesized as a precursor molecule, proinsulin which is then processed into proinsulin and finally to the mature insulin. An increase in blood glucose levels during stimulates insulin release from pancreatic  $\beta$  cells. Binding of insulin to the insulin receptor (INSR) stimulates glucose uptake.

**Alternative names:** IDDM, IDDM1, IDDM2, ILPR, IRDN, MODY10 antibody.

**Form:** Polyclonal antibody supplied as a 200 µl (3 mg/ml) aliquot in PBS, 20% glycerol and 0.05% sodium azide. This antibody is epitope-affinity purified from goat antiserum.

**Immunogen:** Purified recombinant human Insulin produced in E. coli as a fusion protein.

**Specificity:** Gives a positive signal using MBP-Insulin recombinant fusion protein by WB.

**Reactivity:** Reacts with Human, Rat, Mouse, Monkey and Canine proteins

Sample	WB	IHC (F)	IHC (P)	IF	ELISA
Human	+++	+++	+++	ND	ND
Rat	+++	+++	+++	ND	ND
Mouse	+++	+++	+++	ND	ND
Canine	+++	+++	+++	ND	ND
Monkey	+++	+++	+++	ND	ND

+++ excellent, ++ good, + poor, ND not determined

**Usage:**

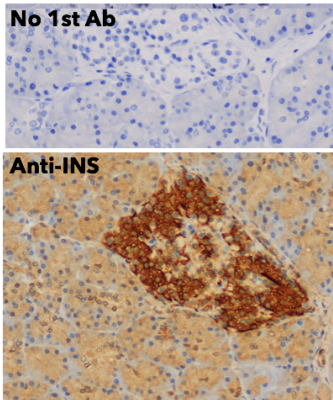
WB: 1:250-1:2,000

IHC (F): 1:250-1:1,000

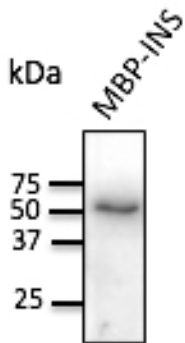
IHC (P): 1:250-1:1,000

**Storage:** For continuous use, store at 2-8 C for one-two days. For extended storage, store in -20 C freezer. Working dilution samples should be discarded if not used within 12 hours.

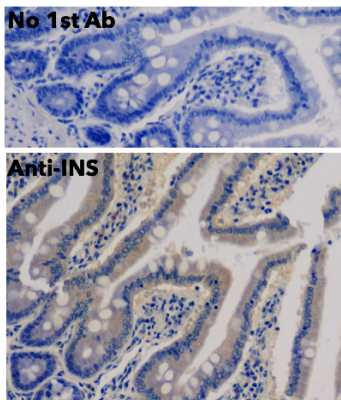
**Special instructions:** The antibody solution should be gently mixed before use..



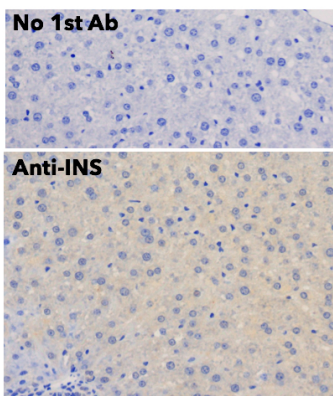
IHC of human pancreas using anti-INS antibody and FFPE tissue after heat-induced antigen retrieval. Anti-INS Ab at 1:750/DAB detection;



Anti-INS Ab at 1/1,000 dilution; 20 ng of recombinant protein per lane; rabbit polyclonal to goat IgG (HRP) at 1/10,000 dilution;



IHC of mouse stomach using anti-INS antibody and FFPE tissue after heat-induced antigen retrieval. Anti-INS Ab at 1:750/DAB detection;



IHC of mouse liver using anti-INS antibody and FFPE tissue after heat-induced antigen retrieval. Anti-INS Ab at 1:750/DAB detection;

For research use only, not for diagnostic use

**SICGEN's Proprietary Immunogen Policy**

In order to produce high specific antibodies SICGEN has invested a lot of time and effort into selecting immunogen sequences. SICGEN has decided to protect this information by not publishing it on the website. However, these sequences are available on request.