

Catalogue No.

AB0147-200

Qty:

800 µg

Anti-Human IgG

Source: Goat

General description: Goat polyclonal antibody to human IgG. IgG is a monomeric immunoglobulin, with two heavy chains and two light chains. IgG can be found in blood and is the most abundant immunoglobulin, constituting 75% of serum immunoglobulins in humans. There are 4 subclasses (IgG1 (66%), IgG2 (23%), IgG3 (7%) and IgG4 (4%)) that can bind to many types of pathogens, protecting the body against them by complement activation, opsonization for phagocytosis and neutralisation of their toxins.

Alternative names: Immunoglobulin G antibody.

Form: Polyclonal antibody supplied as a 200 µl (4 mg/ml) aliquot in PBS, 20% glycerol and 0.05% sodium azide. This antibody is epitope-affinity purified from goat antiserum.

Immunogen: Full human IgG affinity purified from serum of four normal donors

Specificity: Using serum samples detects the light and heavy chains by Western blot.

Reactivity: Reacts with Human proteins

| Sample | WB | IHC (F) | IHC (P) | IF | ELISA |
|--------|-----|---------|---------|----|-------|
| Human | +++ | ND | ND | ND | ND |

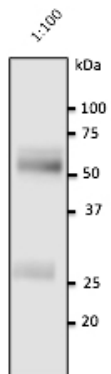
+++ excellent, ++ good, + poor, ND not determined

Usage:

WB: 1:500-1:2,000

Storage: For continuous use, store at 2-8 C for one-two days. For extended storage, store in -20 C freezer. Working dilution samples should be discarded if not used within 12 hours.

Special instructions: The antibody solution should be gently mixed before use..



Anti-IgG Ab at 1:2,500 dilution; 10 μ l of human serum per lane; Rabbit polyclonal to goat IgG (HRP) at 1/10,000 dilution;

For research use only, not for diagnostic use

SICGEN's Proprietary Immunogen Policy

In order to produce high specific antibodies SICGEN has invested a lot of time and effort into selecting immunogen sequences. SICGEN has decided to protect this information by not publishing it on the website. However, these sequences are available on request.