

Catalogue No.

AB0133-100

Qty:

100 µg

Anti-Ty1 Tag

Source: Goat

General description: Goat polyclonal antibody to Ty1 epitope tag. Ty1 epitope tag is useful for the labelling and detection of proteins by immunoprecipitation, immunostaining and immunoblotting techniques. Because of its small size, it is unlikely to affect the tagged protein's biochemical properties.

Alternative names: EVHTNQDPLD Tag antibody.

Form: Polyclonal antibody supplied as a 100 µl (1 mg/ml) aliquot in PBS, 20% glycerol and 0.05% sodium azide. This antibody is epitope-affinity purified from goat antiserum.

Immunogen: Purified recombinant peptide EVHTNQDPLD produced in E. coli.

Specificity: The antibody recognizes the Ty1-tag fused to the amino- or carboxy- termini of targeted proteins in transfected cells.

Reactivity: Reacts with Transfected cells proteins

Sample	WB	IHC (F)	IHC (P)	IF	ELISA
Transfected cells	+++	ND	ND	ND	ND

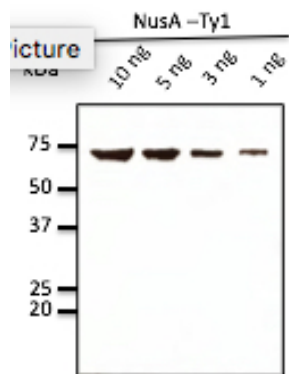
+++ excellent, ++ good, + poor, ND not determined

Usage:

WB: 1:500-1:5,000

Storage: For continuous use, store at 2-8 C for one-two days. For extended storage, store in -20 C freezer. Working dilution samples should be discarded if not used within 12 hours.

Special instructions: The antibody solution should be gently mixed before use..



Anti-Ty1 tag Ab at 2,500 dilution; rabbit polyclonal
to goat IgG (HRP) at 1/10,000 dilution;

For research use only, not for diagnostic use

SICGEN's Proprietary Immunogen Policy

In order to produce high specific antibodies SICGEN has invested a lot of time and effort into selecting immunogen sequences. SICGEN has decided to protect this information by not publishing it on the website. However, these sequences are available on request.