

Catalogue No.

AB0132-100

Qty:

300 µg

Anti-REP2

Source: Goat

General description: REP2 is the component A2 of the RAB geranylgeranyl transferase holoenzyme. REP2 binds most of unprenylated Rab GTPases and then presents them to the catalytic Rab GGTase subunit for the geranylgeranyl transfer reaction and may substitute REP1.

Alternative names: CHML, CHM like, rab escort protein 2 antibody.

Form: Polyclonal antibody supplied as a 100 µl (3 mg/ml) aliquot in PBS, 20% glycerol and 0.05% sodium azide. This antibody is epitope-affinity purified from goat antiserum.

Immunogen: Purified recombinant peptide derived from within residues 617 aa - stop at the C-terminus of human REP2 produced in E. coli.

Specificity: Detects endogenous REP2 by Western blot. This Ab is specific for REP2, it does not cross-react with REP1.

Reactivity: Reacts with Human, Rat, Mouse, Monkey and Canine proteins

Sample	WB	IHC (F)	IHC (P)	IF	ELISA
Human	+++	ND	ND	ND	ND
Rat	+++	ND	ND	ND	ND
Mouse	+++	ND	ND	ND	ND
Canine	+++	ND	ND	ND	ND
Monkey	+++	ND	ND	ND	ND

+++ excellent, ++ good, + poor, ND not determined

Usage:

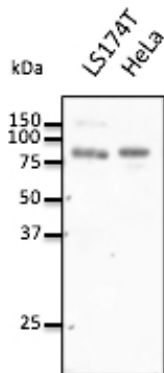
WB: 1:500-1:5,000

Storage: For continuous use, store at 2-8 C for one-two days. For extended storage, store in -20 C freezer. Working dilution samples should be discarded if not used within 12 hours.

Special instructions: The antibody solution should be gently mixed before use..

References:

1. Fonseca AF, Coelho R, Lopes-da-Silva M, et al. Stem Cells Dev 2024 Jul PMID: 39078329



Anti-REP2 Ab at 1/1,000 dilution; 50 µg of total protein per lane; rabbit polyclonal to goat IgG (HRP) at 1/10,000 dilution;

For research use only, not for diagnostic use

SICGEN's Proprietary Immunogen Policy

In order to produce high specific antibodies SICGEN has invested a lot of time and effort into selecting immunogen sequences. SICGEN has decided to protect this information by not publishing it on the website. However, these sequences are available on request.