

**Catalogue No.**

AB8181-200

**Qty:**

600 µg

## Anti-tdTomato

**Source:** Goat

**General description:** Goat polyclonal antibody to tdTomato (red fluorescent protein). tdTomato protein is derived from DsRed, an engineered red fluorescent protein from so-called disc corals of the genus *Discosoma*. It is a genetic fusion of two copies of the dTomato gene, which has been specifically designed for low aggregation. It's brightness and emission wavelength, makes it ideal for live animal research.

**Alternative names:** Cherry fluorescent protein, DsRed, mCherry, red fluorescent protein, RFP antibody.

**Form:** Polyclonal antibody supplied as a 200 µl (3 mg/ml) aliquot in PBS, 20% glycerol and 0.05% sodium azide. This antibody is epitope-affinity purified from goat antiserum.

**Immunogen:** Purified recombinant peptide produced in *E. coli*.

**Specificity:** In 293HEK cells transfected with cds plasmid detects a band of 55 kDa by Western blot. It also detects tdTomato in brain sections by IHC. This antibody (AB8181) is specific for tdTomato and mCherry proteins. It does not cross-react to GFP (green fluorescent protein).

**Reactivity:** Reacts with Transfected cells proteins

Sample	WB	IHC (F)	IHC (P)	IF	ELISA
Transfected cells	+++	+++	+++	+++	ND

+++ excellent, ++ good, + poor, ND not determined

**Usage:**

WB: 1:500-1:2,000

IHC (F): 1:50-1:500

IHC (P): 1:50-1:500

IF: 1:50-1:500

ELISA: ND

**Storage:** For continuous use, store at 2-8 C for one-two days. For extended storage, store in -20 C freezer. Working dilution samples should be discarded if not used within 12 hours.

**Special instructions:** The antibody solution should be gently mixed before use..

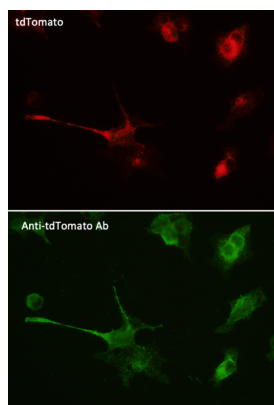
## References:

1. Lorincz R, Alvarez AB, Walkey CJ, et al. *Biomed Pharmacother* 2022 Dec PMID: 36587560
2. Hu H, Duan Y, Wang K, et al. *Cell Rep* 2022 Dec PMID: 36476878
3. Cattaneo P, Hayes MGB, Baumgarten N, et al. *Nat Commun* 2022 Dec PMID: 36460641
4. Ackerman JE, Best KT, Muscat SN, et al. *Cell Rep* 2022 Nov PMID: 36417854
5. Kevely A, Pranclova V, Slavikova M, et al. *Viruses* 2022 Nov PMID: 36560677
6. Flavia Roşianu F, Mihaylov SR, Eder N, et al. *Life Sci Alliance* 2022 Nov PMID: 36446521
7. Wu D, Poddar A, Ninou E, et al. *Cell Genom* 2022 Nov PMID: 36381608
8. Huang X, Yan L, Meng J, et al. *Sci China Life Sci* 2022 Oct PMID: 36322324
9. Albisetti GW, Ganley RP, Pietrafesa F, et al. *Neuron* 2022 Oct PMID: 36323322
10. Pu X, Zhu P, Zhou X, et al. *Cell Mol Life Sci* 2022 Oct PMID: 36315271
11. Gregorio RD, Subah G, Chan JC, et al. *Development* 2022 Sep PMID: 36178075
12. Sparano C, Solís-Sayago D, Vijaykumar A, et al. *Sci Immunol* 2022 Sep PMID: 36054340
13. Rastegar-Pouyani S, Kennedy TE, Kania A. *J Neurosci* 2022 Aug PMID: 36028316
14. Koba S, Kumada N, Narai E, et al. *Nat Commun* 2022 Aug PMID: 36038592
15. Gesuita L, Cavaccini A, Argunsah AO, et al. *Cell Rep* 2022 Aug PMID: 35977514
16. Venkataramanappa S, Saaber F, Abe P, et al. *Cell Rep* 2022 Aug PMID: 35926459
17. Kotas ME, Moore CM, Gurrola JG, et al. *JCI Insight* 2022 Jul PMID: 35608904
18. Owoc MS, Rubio ME, Brockway B, et al. *Hear Res* 2022 Jul PMID: 35617926
19. Xu Y, Zhao J, Ren Y, et al. *Cell Res* 2022 Jun PMID: 35508506
20. Radecki KC, Ford MJ, Phillipps HR, et al. *FASEB Bioadv* 2022 PMID: 35812077
21. Nemeth DP, Liu X, McKim DB, et al. *J Inflamm Res* 2022 Mar PMID: 35282272
22. Abed S, Reilly A, Arnold SJ, et al. *Front Cell Neurosci* 2022 Mar PMID: 35401124
23. Jeon HY, Choi J, Kraaijer L, et al. *EMBO J* 2022 Mar PMID: 35285539
24. Tomasello U, Klingler E, Niquille M, et al. *Cell Rep* 2022 Feb PMID: 35172154
25. Wei F, Uchihara T, Yonemura A, et al. *FEBS J* 2022 Dec PMID: 36565059
26. Murthy PKL, Xi R, Arguijo D, et al. *Dev Cell* 2022 Feb PMID: 35134344
27. Hirschberg S, Dvorzhak A, Rasooli-Nejad SMA et al. *Front Cell Neurosci* 2022 Jan PMID: 35173582
28. Teijueiro LG. PhD Thesis, University Geneve, Switzerland, 2022
29. Amberg N and Hippenmeyer S. *STAR Protoc* 2021 Dec PMID: 34825212
30. Shroff UN, Gyarmati G, Izuhara A, et al. *Am J Physiol Renal Physiol* 2021 Oct PMID: 34693742
31. Nowak N, Wood MB, Glowatzki E, et al. *eNeuro* 2021 Oct PMID: 34607806
32. Huang X, Yan L, Kou S, et al. *Transgenic Res* 2021 Sep PMID: 34542814
33. Bilal M, Nawaz A, Kado T, et al. *Mol Metab* 2021 Sep PMID: 34562641
34. Hicks-Berthet J, Ning B, Federico A, et al. *Cell Rep* 2021 Jul PMID: 34260916
35. Wei F, Uchihara T, Yonemura A, et al. *FEBS J* 2022 Dec PMID: 36565059
36. Kirtay M, Sell J, Marx C, et al. *Nat Commun* 2021 Jul PMID: 34210973
37. de Camargo LCB, Guaddachi F, Bergerat D, et al. *Sci Rep* 2020 Jun PMID: 32488182
38. Medeiros de Lima JB, Debarba LK, Rupp AC, et al. *Cells* 2021 May PMID: 34063647
39. Wang X, Shi H, Zhou J, et al. *J Genet Genomics* 2020 May PMID: 32703661
40. Harris L, Rigo P, Stiehl T, et al. *Cell Stem Cell* 2021 Feb PMID: 33581058
41. Li X, Liu G, Yang L, et al. *Neuroscience Bulletin* 2021 Feb PMID: 33606177
42. Bottes S, Jaeger BN, Pilz GA, et al. *Nat Neurosci* 2021 Feb PMID: 33349709
43. de Lara PT, Castañón H, Vermeer M, et al. *Nat Commun* 2021 Feb PMID: 33536445
44. Nichols AEC, Miller SE, Green LJ, et al. *bioRxiv* 2021
45. Li Y, Ritchie EM, Steinke CL, et al. *Elife* 2021 Jan PMID: 33475086
46. McClain JL, Mazzotta EA, Maradiaga N, et al. *Am J Physiol Gastrointest Liver Physiol* 2020 Dec. PMID: 32996781

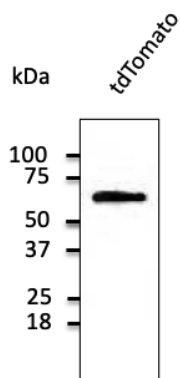
47. Chen KS, Lynton Z, Lim JWC, et al. *Carcinogenesis* 2020 Dec PMID: 33346791
48. Zhang KY, Tuffy C, Mertz JL, et al. *Stem Cell Reports* 2020 Dec PMID: 33382979
49. Pinheiro T, Mayor I, Edwards S, et al. *J Neurosci Methods* 2020 Nov PMID: 33217411
50. Best KT, Nichols AEC, Knapp E, et al. *Sci Signal* 2020 Nov PMID: 33203721
51. Mansky B, PhD Thesis, University of California, San Francisco, USA, 2020
52. Edwards SJ, Carannante V, Kuhnigk K, et al. *Front Mol Biosci* 2020 Sep PMID: 33195398
53. Xiong M, Tao Y, Gao Q, et al. *Cell Stem Cell* 2020 Sep PMID: 32966778
54. Sada N, Fujita Y, Mizuta N, et al. *Cell Death Dis* 2020 Aug PMID: 32811822
55. Aboualizadeh E, Phillips MJ, McGregor JE, et al. *Stem Cell Reports* 2020 Jul PMID: 32707075
56. Laukoter S, Pauler FM, Beattie R, et al. *Neuron* 2020 Jul PMID: 32707083
57. Muller PA, Schneeberger M, Matheis F, et al. *Nature* 2020 Jul PMID: 32641826
58. Humbel M, Ramosaj M, Zimmer V, et al. *Gene Ther* 2020 Jul PMID: 32632267
59. Hong SJ. PhD Thesis. UC San Francisco 2020
60. Thurner M, Deutsch M, Janke K, et al. *Stem Cell Res Ther* 2020 Jun PMID: 32532320
61. de Camargo LCB, Guaddachi F, Bergerat D, et al. *Sci Rep* 2020 Jun PMID: 32488182
62. Wang X, Shi H, Zhou J, et al. *J Genet Genomics* 2020 May PMID: 32703661
63. Morral C, Stanisavljevic J, Hernando-Momblona X, et al. *Cell Stem Cell* 2020 May PMID: 32396863
64. Edwards TJ, Fenlon LR, Dean RJ, et al. *NeuroImage* 2020 Apr PMID: 32360691
65. Nomura K, Nakanishi M, Ishidate F, et al. *Neuron* 2020 Mar PMID: 32229307
66. Zhang Y, Liu G, Guo T, et al. *Cell Rep* 2020 Mar PMID: 32234482
67. Cadwell CR, Scala F, Fahey PG, et al. *Elife*. 2020 Mar PMID: 32134385
68. Kashiwagi M, Kanuka M, Tatsuzawa C, et al. *Curr Biol* 2020 Feb PMID: 32032507
69. Ruetten H, Wegner KA, Kennedy CL, et al. *Am J Physiol Renal Physiol* 2020 Jan PMID: 31904290
70. Best KT, Knapp E, Ketonis C, et al. *bioRxiv* 2020
71. Hirschberg S, Dvorzhak A, Rasooli-Nejad S, et al. *bioRxiv* 2020
72. Morcom L, Gobius I, Marsh A, et al. *bioRxiv* 2020
73. Stachniak T, Kastli R, Hanley O, et al. *bioRxiv* 2020
74. Frezel N, Platonova E, Voigt F, et al. *bioRxiv* 2020
75. de Lara P, Castañón H, Vermeer M, Núñez N, et al. *bioRxiv* 2020
76. Muller P, Schneeberger M, Matheis F, et al. *bioRxiv* 2020
77. Best K, Korcari A, Mora K, Knapp E, et al. *bioRxiv* 2020
78. Tran HN, Park W, Seong S, et al. *Dev Dyn* 2019 Dec PMID: 31872525
79. Stefanson O, MSc Thesis, Univ. of California - Santa Cruz, United States of America 2019
80. Monaco SA, PhD Thesis, Drexel University, United States of America 2019
81. Frezel N, PhD Thesis, Université Paris sciences et lettres, France and Universität Zürich, Switzerland 2019
82. Pan H, Fatima M, Li A, et al. *Neuron* 2019 Sep PMID: 31324538
83. Winnubst J, Bas E, Ferreira TA, et al. *Cell* 2019 Sep PMID: 31495573
84. Park H, Choi D, Park J, et al. *Adv Sci* 2019 Sep PMID: 31763149
85. Ruud J, Alber J, Tokarska A, et al. *Cell Rep* 2019 Jun PMID: 31189104
86. Andersen RE, Hong SJ, Lim JJ, et al. *Dev Cell* 2019 May PMID: 31112699
87. Pagani M, Albisetti GW, Sivakumar N, et al. *Neuron* 2019 May PMID: 31103358
88. Ip CK, Zhang L, Farzi A, et al. *Cell Metab* 2019 Apr PMID: 31031093
89. Mathieu C, Ferren M, Jurgens E, et al. *J Virol* 2019 Apr PMID: 30728259
90. Tai Y, Gallo NB, Wang M, et al. *Neuron* 2019 Feb PMID: 30846310
91. Muller PA, Kerner Z, Pane MC, et al. *bioRxiv* 2019
92. Winnubst J, Bas E, Ferreira TA, et al. *bioRxiv* 2019
93. Albisetti GW, Pagani M, Platonova E, et al. *J Neurosci* 2019 Jan PMID: 30655357
94. Andersen RE, PhD Thesis, University of California, San Francisco, USA 2019
95. Blomfield IM, PhD Thesis, University College of London, United Kingdom 2018
96. Smidler AL, Scott SN, Marnett E, et al. *Parasit Vectors* 2018 Dec PMID: 30583744
97. Ambrozkiwicz MC, Schwark M, Kishimoto-Suga M, et al. *Neuron* 2018 Oct PMID: 30392800
98. Zalucki O, Harris L, Harvey TJ, et al. *Cereb Cortex* 2018 Oct PMID: 30272140

99. Duan L, Zhang XD, Miao WY, et al. *Neuron* 2018 Sep PMID: 30269986
100. Blomfield IM, Rocamonde B, Masdeu MDM, et al. *bioRxiv* 2018
101. Niquille M, Limoni G, Markopoulos F, et al. *Elife* 2018 Mar PMID: 29557780
102. Koba S, Hanai E, Kumada N, et al. *J Physiol* 2018 Jul PMID: 30019338
103. Coux RX, Teixeira FK, Lehmann R. *Development* 2018 Apr PMID: 29511022
104. Weider M, Starost LJ, Groll K, et al. *Nat Commun* 2018 Mar PMID: 29500351
105. Ishibashi F, Shimizu H, Nakata T, et al. *Stem Cell Report* 2017 Dec PMID: 29233556
106. Unnersjö-Jess D, Scott L, Sevilla SZ, et al. *Kidney Int* 2017 Dec PMID: 29241621
107. Lacraz GPA, Junker JP, Gladka MM, et al. *Circulation* 2017 Oct PMID: 28724751
108. Hurni N, Kolodziejczak M, Tomasello U, et al. *Cereb Cortex* 2017 May PMID: 28334356
109. Paolino A, Fenlon LR, Kozulin P, et al. *J Neurosci Methods* 2017 Sep PMID: 28917658
110. Anzo M, Sekine S, Makihara S, et al. *Genes Dev* 2017 May PMID: 28637694
111. Beattie R, Postiglione MP, Burnett LE, et al. *Neuron* 2017 May PMID: 28472654
112. Gschwend J, Sherman SPM, Ridder F, et al. *J Exp Med.* 2021 Oct PMID: 34431978
113. Wei F, Uchihara T, Yonemura A, et al. *FEBS J* 2022 Dec PMID: 36565059
114. Mätlik K, Govek EE, Paul MR, et al. *bioRxiv* 2023
115. Albors AR, Singer GA, Llorens-Bobadilla E, et al. *Dev Cell* 2023 Jan PMID: 36706756
116. Nichols AEC, Wagner NW, Ketonis C, et al. *bioRxiv* 2023 Feb
117. Frezel N, Ranucci M, Foster E, et al. *Cell Rep* 2023 Mar PMID: 36947543
118. Tran HN, Nguyen QH, Jeong JN, et al. *Cell Death Differ* 2023 Apr. PMID: PMID: 37081114
119. Wu Y, Bottes S, Fisch R, et al. *Nat Aging* 2023 Apr PMID: 37117787
120. Abed S, PhD Thesis, UC Santa Cruz, USA 2023
121. McCall A, Tanjore H, Burman A, et al. *bioRxiv* 2023
122. Mätlik K, Govek EE, Paul MR, et al. *bioRxiv* 2023 Feb PMID: <https://pubmed.ncbi.nlm.nih.gov/37117787/>
123. Ibors AR, Singer GA, Llorens-Bobadilla E, et al. *Dev Cell* 2023 Feb PMID: 36706756
124. Vigil Garcia M, PhD Thesis Utrecht University, Netherlands 2023
125. Nichols AEC, Wagner NW, Ketonis C, et al. *bioRxiv* 2023 Feb PMID: 36778469
126. Ishikawa T, Murata K, Okuda H, et al. *iScience.* 2023 Mar PMID: 36968067
127. Gerhardt LMS, Koppitch K, Gestel JV, et al. *J Am Soc Nephrol* 2023 Apr
128. Fazal SV, Mutschler C, Chen CZ, et al. *Front Cell Neurosci* 2023 Apr PMID: 37091921
129. Ueda Y, Nakamura T, Nie J, et al. *Development* 2023 Jun PMID: 37381908
130. Wang L, University of Michigan, USA 2023
131. Nguyen RE, Koukoutselos K, Forro T, et al. *Sci Adv* 2023 Jun PMID: 37256958
132. Mätlik K, Govek EE, Paul MR, et al. *Genes Dev* 2023 Jul PMID: 37491148
133. Lee IK, Xie R, Luz-Madrigal A, et al. *Bioact Mater* 2023 Jul PMID: 37575875
134. Ackerman JE, Adjei-Sowah E, Korcari A, et al. *bioRxiv* 2023 Jul PMID: 37502924
135. Pitirri MK, Richtsmeier JT, Kawasaki M, et al. *Anat Rec (Hoboken)* 2023 Jul PMID: 37497849
136. Hassel LA, Fröb F, Küspert M, et al. *Glia* 2023 Aug PMID: 37017184
137. van Bruggen R, Patel ZH, Wang M, et al. *eNeuro* 2023 Oct PMID: 37775311
138. Irie N, Lee SM, Lorenzi V, et al. *Nat Cell Biol* 2023 Oct PMID: 37709822
139. Li Y, Xiao D, Chen H, et al. *iScience* 2023 Nov. PMID: 38089586
140. Cantacorps L, Zhu J, Yagoub S, et al. *Mol Metab* 2023 Dec PMID: 38142972
141. Hassel L. PhD Thesis, Germany 2023
142. Madrid LI, Hafey K, Bandhavkar S, et al. *Development* 2024 Jan
143. Cheung G, Pauler FM, Koppensteiner P, et al. *Neuron* 2024 Jan PMID: 38096816
144. Ackerman JE, Muscat SN, Adjei-Sowah E, et al. *Matrix Biol* 2024 Jan PMID: 38101460
145. Moreno-Manuel AI, Macías A, Cruz FM, et al. *Cardiovasc Res* 2024 Jan PMID: 38261726
146. Deska-Gauthier D, Borowska-Fielding J, Jones C, et al. *Cell Rep* 2024 Jan PMID: 38160393
147. Saxon D, Alderman PJ, Sorrells SF, et al. *Biorxiv* Jan24 PMID: 38260244
148. Zuttion MSSR, Parimon T, Yao C, et al. *Am J Respir Cell Mol Biol* 2024 Jan PMID: 38207122
149. Vossen C, Schmidt P, Wunderlich CM, et al. *Cells* 2024 Jan PMID: 38201306
150. Fisher J, Verhagen M, Long Z, et al. *Neuron* 2024 Feb PMID: 38086373

151. Leon S, Simon V, Lee TH, et al. Nat Commun 2024 Apr PMID: 38658557
152. Saxon D, Alderman PJ, Sorrells SF, et al. eNeuro 2024 Jun PMID: 38811163
153. Tan Z, Chen P, Dong X, et al. Cell Rep 2024 Jun PMID: 38865240
154. Madsen S, Delgado AC, Cadilhac C, et al. Nat Commun 2024 Jun PMID: 38942786
155. Miranda OA, Cheung G, Hippenmeyer S. Methods Mol Biol 2024 PMID: 39134857
156. Cheung G, Pauler FM, Koppensteiner P, et al. STAR Protoc 2024 Jul PMID: 38968076
157. Potapenko IV, Ishikawa T, Okuda H, et al. Biochem Biophys Res Commun 2024 Aug PMID: 39236586
158. Dyer B, Yu SO, Brown RL, et al. Cell Rep Methods 2024 Aug PMID: 39127043
159. Damilou A, Cai L, Argun?ah AO, et al. Nat Commun 2024 Aug PMID: 39090081
160. Yagoub S, Chesters RA, Ott J, et al. Sci Rep 2024 Aug PMID: 39209992



Immunofluorescence – anti-tdTomato Ab in 293HEK cells transfected with cDNA at 1/50 dilution; cells were fixed with 4% of PFA;



Anti-tdTomato Ab at 1/1,000 dilution; 293HEK cells transfected with cDNA; lysates at 50 µg per lane; rabbit polyclonal to goat IgG (HRP) at 1/10,000 dilution;

For research use only, not for diagnostic use

**SICGEN's Proprietary Immunogen Policy**

In order to produce high specific antibodies SICGEN has invested a lot of time and effort into selecting immunogen sequences. SICGEN has decided to protect this information by not publishing it on the website. However, these sequences are available on request.