

**Catalogue No.**

AB0127-200

**Qty:**

600 µg

## Anti-myc

**Source:** Goat

**General description:** Goat polyclonal antibody to myc epitope tag. c-Myc epitope tag is useful for the labeling and detection of proteins by immunoprecipitation, immunostaining and immunoblotting techniques. Because of its small size, it is unlikely to affect the tagged protein's biochemical properties.

**Alternative names:** EQKLISEEDL and MYC antibody.

**Form:** Polyclonal antibody supplied as a 200 µl (3 mg/ml) aliquot in PBS, 20% glycerol and 0.05% sodium azide. This antibody is epitope-affinity purified from goat antiserum.

**Immunogen:** Purified recombinant peptide EQKLISEEDL corresponding to amino acids 410-419 of Human c-Myc produced in E. coli

**Specificity:** This antibody recognizes recombinant proteins containing EQKLISEEDL epitope tag fused to either amino- or carboxy-terminal of targeted proteins in transfected cells.

**Reactivity:** Reacts with Transfected cells proteins

Sample	WB	IHC (F)	IHC (P)	IF	ELISA
Transfected cells	+++	ND	ND	ND	ND

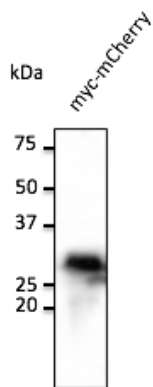
+++ excellent, ++ good, + poor, ND not determined

**Usage:**

WB: 1:500-1:2,000

**Storage:** For continuous use, store at 2-8 C for one-two days. For extended storage, store in -20 C freezer. Working dilution samples should be discarded if not used within 12 hours.

**Special instructions:** The antibody solution should be gently mixed before use..



Anti-myc tag Ab at 1/1,000 dilution; 293 cells transfected with myc-mCherry (red fluorescent protein); rabbit polyclonal to goat IgG (HRP) at 1/10,000 dilution;

For research use only, not for diagnostic use

#### **SICGEN's Proprietary Immunogen Policy**

In order to produce high specific antibodies SICGEN has invested a lot of time and effort into selecting immunogen sequences. SICGEN has decided to protect this information by not publishing it on the website. However, these sequences are available on request.