

Catalogue No.

Qty:

800 µg

Anti-Esp1

Source: Goat

General description: Goat polyclonal antibody to Esp1. Exocrine gland secreted peptide 1 is a male-specific pheromone secreted by the extraorbital lacrimal gland into tears, which is recognized by the Vmn2r116/V2rp5 receptor.

Alternative names: Exocrine gland-secreted peptide 1 antibody.

Form: Polyclonal antibody supplied as a 200 µl (4 mg/ml) aliquot in PBS, 20% glycerol and 0.05% sodium azide. This antibody is epitope-affinity purified from goat antiserum.

Immunogen: Purified full recombinant protein produced in E. coli.

Specificity: Detects the recombinant protein Esp1 by Western blot.

Reactivity: Reacts with Mouse proteins

Sample	WB	IHC (F)	IHC (P)	IF	ELISA
Mouse	+++	ND	ND	ND	ND

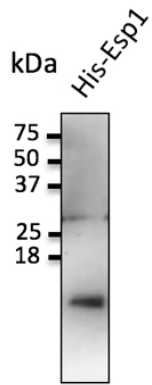
+++ excellent, ++ good, + poor, ND not determined

Usage:

WB: 1:500-1:2,000

Storage: For continuous use, store at 2-8 C for one-two days. For extended storage, store in -20 C freezer. Working dilution samples should be discarded if not used within 12 hours.

Special instructions: The antibody solution should be gently mixed before use..



Anti-Esp1 Ab at 1/1,000 dilution; 20 ng of recombinant protein per lane; rabbit polyclonal to goat IgG (HRP) at 1/10,000 dilution;

For research use only, not for diagnostic use

SICGEN's Proprietary Immunogen Policy

In order to produce high specific antibodies SICGEN has invested a lot of time and effort into selecting immunogen sequences. SICGEN has decided to protect this information by not publishing it on the website. However, these sequences are available on request.