

Catalogue No.

AB0108-200

Qty:

600 µg

Anti-HFQ2

Source: Goat

General description: Goat polyclonal antibody to HFQ2. HFQ2 protein is a RNA chaperone that binds small regulatory RNA (sRNAs) and mRNAs to facilitate mRNA translational regulation in response to changes in metabolite concentrations and environmental and envelope stress.

Alternative names: N/A

Form: Polyclonal antibody supplied as a 200 µl (3 mg/ml) aliquot in PBS, 20% glycerol and 0.05% sodium azide. This antibody is epitope-affinity purified from goat antiserum.

Immunogen: Purified recombinant peptide derived from within residues 130 aa to the C-terminus of Burkholderia cenocepacia HFQ2 produced in E. coli.

Specificity: Detects the immunogen by Western blot.

Reactivity: Reacts with Burkholderia proteins

Sample	WB	IHC (F)	IHC (P)	IF	ELISA
Burkholderia	+++	ND	ND	ND	ND

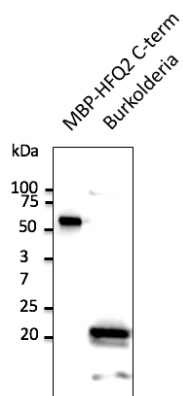
+++ excellent, ++ good, + poor, ND not determined

Usage:

WB: 1:500-1:2,000

Storage: For continuous use, store at 2-8 C for one-two days. For extended storage, store in -20 C freezer. Working dilution samples should be discarded if not used within 12 hours.

Special instructions: The antibody solution should be gently mixed before use..



Anti-HFQ2 Ab at 1/500 dilution; 50 ng of protein per lane and 100 µg of total protein (Burkholderia cell lysate); rabbit polyclonal to goat IgG (HRP) at 1/10,000 dilution;

For research use only, not for diagnostic use

SICGEN's Proprietary Immunogen Policy

In order to produce high specific antibodies SICGEN has invested a lot of time and effort into selecting immunogen sequences. SICGEN has decided to protect this information by not publishing it on the website. However, these sequences are available on request.