

**Catalogue No.**

AB0099-200

**Qty:**

600 µg

## anti-Random Protein

**Source:** Goat

**General description:** Goat polyclonal antibody to Random recombinant protein fragment. This Random recombinant protein fragment does not have any homology to known protein sequence. This antibody can be used in biochemical and cell biology experiments as a negative control.

**Alternative names:** Random goat IgG.

**Form:** Polyclonal antibody supplied as a 200 µl (3 mg/ml) aliquot in PBS, 20% glycerol and 0.05% sodium azide. This antibody is epitope-affinity purified from goat antiserum.

**Immunogen:** Purified recombinant peptide produced in E. coli.

**Specificity:** Recognizes the immunogen by Western blot.

**Reactivity:** Reacts with Transfected cells and Recombinant protein proteins

Sample	WB	IHC (F)	IHC (P)	IF	ELISA
Transfected cells	+++	ND	ND	ND	ND
Recombinant protein	+++	ND	ND	ND	ND

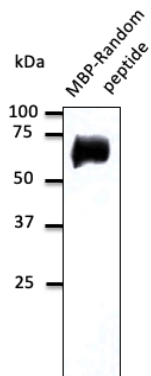
+++ excellent, ++ good, + poor, ND not determined

**Usage:**

WB: 1:500-1:2,000

**Storage:** For continuous use, store at 2-8 C for one-two days. For extended storage, store in -20 C freezer. Working dilution samples should be discarded if not used within 12 hours.

**Special instructions:** The antibody solution should be gently mixed before use..



Anti-Random peptide Ab at 1/1,000 dilution; 50 ng of protein per lane; rabbit polyclonal to goat IgG (HRP) at 1/10,000 dilution;

For research use only, not for diagnostic use

**SICGEN's Proprietary Immunogen Policy**

In order to produce high specific antibodies SICGEN has invested a lot of time and effort into selecting immunogen sequences. SICGEN has decided to protect this information by not publishing it on the website. However, these sequences are available on request.