

Catalogue No.

AB0094-200

Qty:

600 µg

Anti-CAV2

Source: Goat

General description: Goat polyclonal to Caveolin-2 – caveolae marker. This scaffolding protein acts as an accessory protein in conjunction with CAV1 in targeting to lipid rafts and driving caveolae formation. It is involved in essential cellular functions, including cellular growth control, apoptosis, lipid metabolism and signal transduction. CAV2 might function as a tumor suppressor as well.

Alternative names: CAV2, caveolin, caveolae protein 2 antibody.

Form: Polyclonal antibody supplied as a 200 µl (3 mg/ml) aliquot in PBS, 20% glycerol and 0.05% sodium azide. This antibody is epitope-affinity purified from goat antiserum.

Immunogen: Recombinant peptide derived from within residues 50 aa to the N-terminus of human CAV2 produced in E. coli.

Specificity: Detects a band of approximately 20 kDa by Western blot in HaCat cell lysate and 45 kDa CAV2-GFP transfected cell lysate. This Ab does not recognize CAV1.

Reactivity: Reacts with Human, Rat, Mouse, Monkey and Canine proteins

Sample	WB	IHC (F)	IHC (P)	IF	ELISA
Human	+++	+++	+++	+++	ND
Rat	+++	+++	+++	+++	ND
Mouse	+++	+++	+++	+++	ND
Canine	+++	+++	+++	+++	ND
Monkey	+++	+++	+++	+++	ND

+++ excellent, ++ good, + poor, ND not determined

Usage:

WB: 1:500-1:2,000

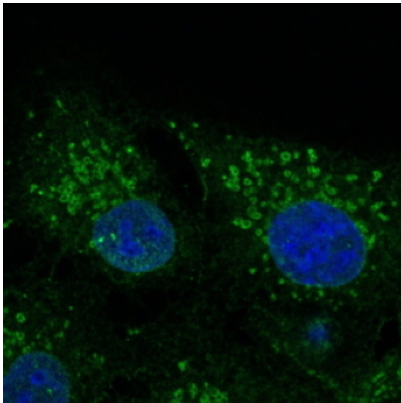
IF: 1:50-1:200

IHC (P): 1:200-1:1,000

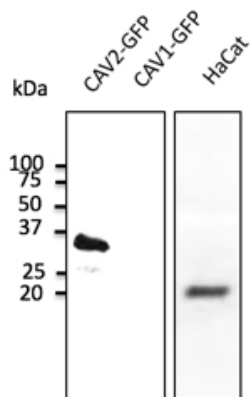
IHC (F): 1:200-1:1,000

Storage: For continuous use, store at 2-8 C for one-two days. For extended storage, store in -20 C freezer. Working dilution samples should be discarded if not used within 12 hours.

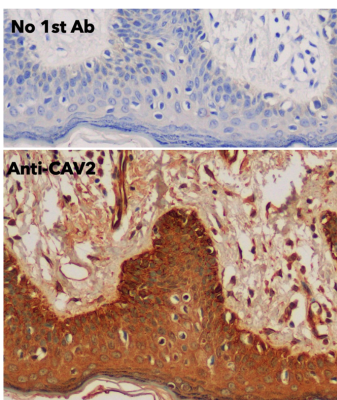
Special instructions: The antibody solution should be gently mixed before use..



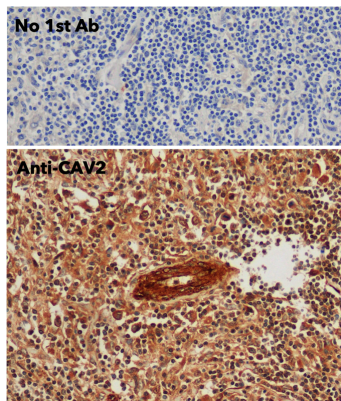
Immunofluorescence – anti-CAV2 Ab - Caveolae Marker at 1/100 dilution in NHI/3T3 cells; cells were fixed with methanol and permeabilized with 0.1% saponin;



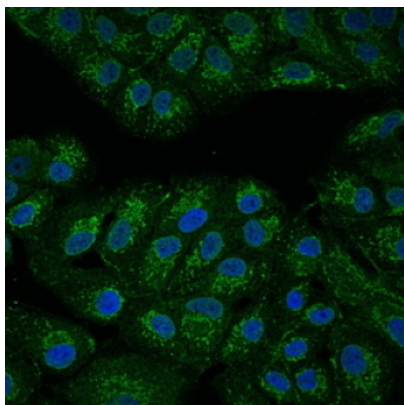
Anti-CAV2 at 1/1,000 dilution; 50 µg lysate per lane of transfected HEK293 and 100 µg of HaCat cell line; rabbit polyclonal to goat IgG (HRP) at 1/10,000 dilution;



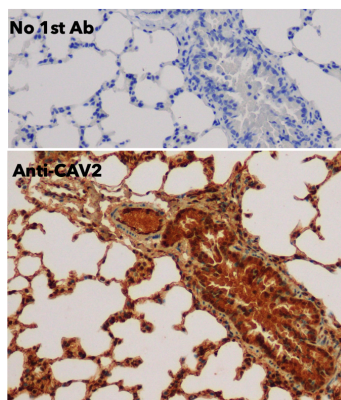
IHC of human skin using anti-CAV2 antibody and FFPE tissue after heat-induced antigen retrieval. Anti-CAV2 Ab at 1:500/DAB detection;



IHC of human lymph node using anti-CAV2 antibody and FFPE tissue after heat-induced antigen retrieval. Anti-CAV2 Ab at 1:500/DAB detection;



Immunofluorescence – anti-CAV2 Ab - Caveolae Marker at 1/100 dilution in NHI/3T3 cells; cells were fixed with methanol and permeabilized with 0.1% saponin;



IHC of mouse lung using anti-CAV2 antibody and FFPE tissue after heat-induced antigen retrieval. Anti-CAV2 Ab at 1:500/DAB detection;

For research use only, not for diagnostic use

SICGEN's Proprietary Immunogen Policy

In order to produce high specific antibodies SICGEN has invested a lot of time and effort into selecting immunogen sequences. SICGEN has decided to protect this information by not publishing it on the website. However, these sequences are available on request.