

Catalogue No.

AB0092-200

Qty:

600 µg

Anti-CD31

Source: Goat

General description: Goat polyclonal antibody to CD31. CD31 is a 130-140 kDa type I transmembrane glycoprotein. It is expressed in platelets, granulocytes, stem cells of myeloid lineage, monocytes and endothelial cells. It is likely to be involved in integrin activation, leukocyte migration and angiogenesis.

Alternative names: CD31/endoCAM, endoCAM, PECA1, PECAM1, PECAM-1, platelet/endothelial adhesion molecule 1 antibody.

Form: Polyclonal antibody supplied as a 200 µl (3 mg/ml) aliquot in PBS, 20% glycerol and 0.05% sodium azide. This antibody is epitope-affinity purified from goat antiserum.

Immunogen: Purified recombinant peptide within residues 690 aa to the C-terminus of human CD31 produced in E. coli.

Specificity: Using PBM cell lysates detects a 130-140 kDa band by Western blot.

Reactivity: Reacts with Human, Rat, Mouse, Monkey and Canine proteins

Sample	WB	IHC (F)	IHC (P)	IF	ELISA
Human	+++	+++	+++	ND	ND
Rat	+++	+++	+++	ND	ND
Mouse	+++	+++	+++	ND	ND
Canine	+++	+++	+++	ND	ND
Monkey	+++	+++	+++	ND	ND

+++ excellent, ++ good, + poor, ND not determined

Usage:

WB: 1:500-1:2,000

IHC (F): 1:250-1:1,000

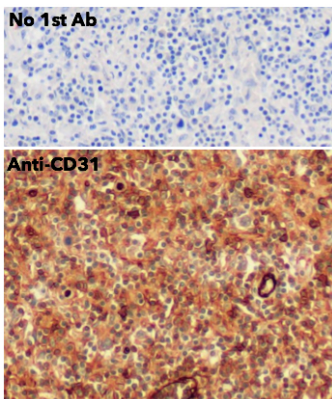
IHC (P): 1:250-1:1,000

Storage: For continuous use, store at 2-8 C for one-two days. For extended storage, store in -20 C freezer. Working dilution samples should be discarded if not used within 12 hours.

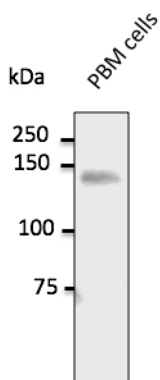
Special instructions: The antibody solution should be gently mixed before use..

References:

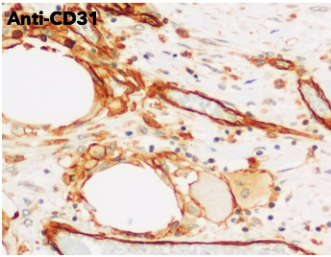
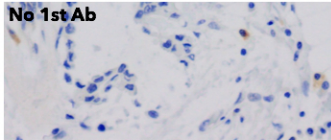
1. Ferreira JV, Soares AR, Ramalho J, et al. Sci Adv 2022 Mar PMID: 35333565
2. Martins FO, Sacramento JF, Olea E, et al. Antioxidants (Basel) 2021 Aug PMID: 34439481
3. Rodrigues T, Borges P, Mar L, et al. Pharmacol Res 2020 Sep. PMID: 32942016
4. Ferreira JV, Rosa Soares A, Ramalho JS, et al. PLoS One. 2019 Oct PMID: 31613922
5. Rodrigues TDA, PhD Thesis, University of Coimbra, Portugal 2018
6. Fonseca LMO, MSc Thesis, University of Berlin, Germany 2018
7. Rodrigues T, Matafome P, Sereno J, et al. Sci Rep 2017 May PMID: 28490763
8. Sacramento JF, Ribeiro MJ, Rodrigues T, et al. Respir Physiol Neurobiol 2016 Jul PMID: 26993367
9. Ferreira JV, Soares AR, Ramalho JS, et al. Scientific Reports 5. May 2015 PMID: 25958982



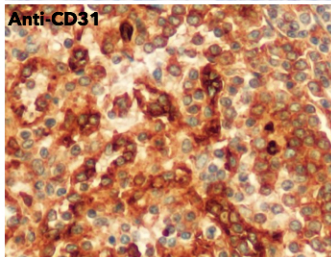
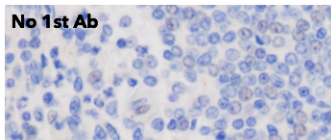
IHC of human lymph node using anti-CD31 antibody and FFPE tissue after heat-induced antigen retrieval. Anti-CD31 Ab at 1:750/DAB detection;



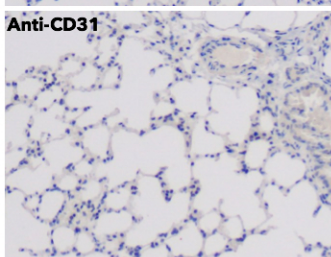
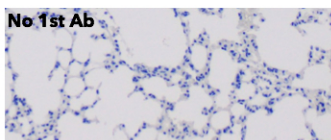
Endogenous CD31 detected at 1/500 dilution; lysate at 100 µg per lane and rabbit polyclonal to goat IgG (HRP) at 1/10,000 dilution;



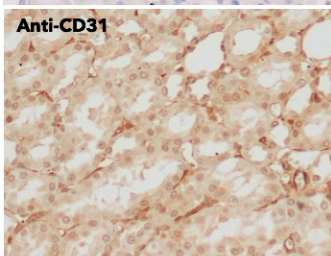
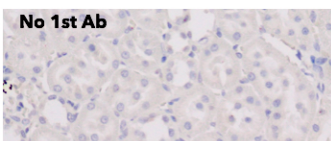
IHC of human breast carcinoma using anti-CD31 antibody and FFPE tissue after heat-induced antigen retrieval. Anti-CD31 Ab at 1:750/DAB detection;



IHC of mouse spleen using anti-CD31 antibody and FFPE tissue after heat-induced antigen retrieval. Anti-CD31 Ab at 1:750/DAB detection;



IHC of mouse lung using anti-CD31 antibody and FFPE tissue after heat-induced antigen retrieval. Anti-CD31 Ab at 1:750/DAB detection;



IHC of mouse kidney using anti-CD31 antibody and FFPE tissue after heat-induced antigen retrieval. Anti-CD31 Ab at 1:750/DAB detection;

For research use only, not for diagnostic use

In order to produce high specific antibodies SICGEN has invested a lot of time and effort into selecting immunogen sequences. SICGEN has decided to protect this information by not publishing it on the website. However, these sequences are available on request.