

Catalogue No.

AB0091-200

Qty:

600 µg

Anti-CD4

Source: Goat

General description: Goat polyclonal antibody to CD4. CD4 is a member of the immunoglobulin superfamily, a membrane glycoprotein of T lymphocytes that interacts with major histocompatibility complex class II antigens and a receptor for the human immunodeficiency virus. This protein is expressed not only on the surface of T helper cells and regulatory T cells but also on monocytes, macrophages and dendritic cells. It functions to initiate or amplify the early phase of T-cell activation and may function as an important mediator of indirect neuronal damage in infectious and immune-mediated diseases of the central nervous system.

Alternative names: CD4mut, CD4 antigen (p55), CD4 Receptor, T-cell surface antigen T4/Leu-3 and T-cell surface glycoprotein CD4 antibody.

Form: Polyclonal antibody supplied as a 200 µl (3 mg/ml) aliquot in PBS, 20% glycerol and 0.05% sodium azide. This antibody is epitope-affinity purified from goat antiserum.

Immunogen: Purified recombinant peptide derived from within 50 to 235 aa, corresponding to the external domain of human CD4 produced in E. coli.

Specificity: Using spleen lysate detects a 52 kDa band by Western blot.

Reactivity: Reacts with Human, Rat, Mouse, Monkey and Canine proteins

Sample	WB	IHC (F)	IHC (P)	IF	ELISA
Human	+++	+++	+++	ND	ND
Rat	+++	+++	+++	ND	ND
Mouse	+++	+++	+++	ND	ND
Canine	+++	+++	+++	ND	ND
Monkey	+++	+++	+++	ND	ND

+++ excellent, ++ good, + poor, ND not determined

Usage:

WB: 1:500-1:2,000

IHC (F): 1:250-1:1,000

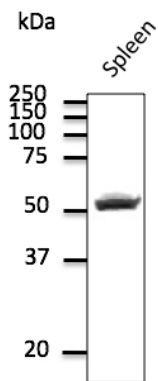
IHC (P): 1:250-1:1,000

Storage: For continuous use, store at 2-8 C for one-two days. For extended storage, store in -20 C freezer. Working dilution samples should be discarded if not used within 12 hours.

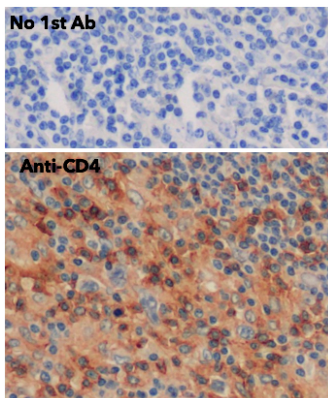
Special instructions: The antibody solution should be gently mixed before use..

References:

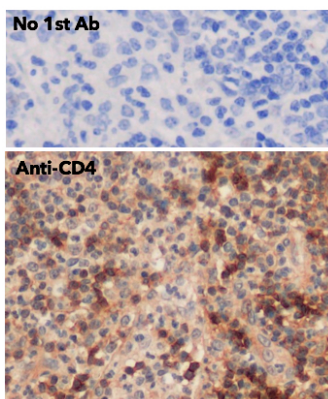
1. Helsby MA, Leader PM, Fenn JR, et al. BMC Cell Biol. 2014 Feb 14;15:6. PMID: 24528853



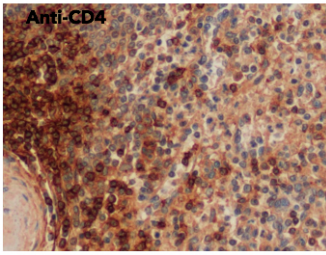
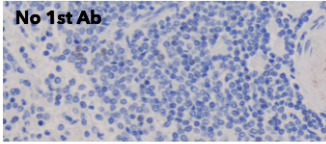
Endogenous CD4 detected at 1/500 dilution; lysate at 100 µg per lane and rabbit polyclonal to goat IgG (HRP) at 1/10,000 dilution;



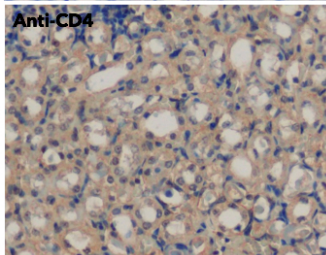
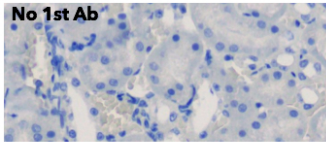
IHC of human lymph node using anti-CD4 antibody and FFPE tissue after heat-induced antigen retrieval. Anti-CD4 Ab at 1:750/DAB detection;



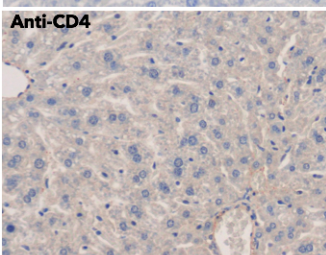
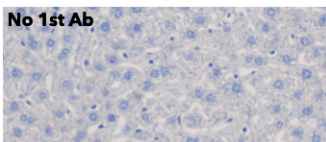
IHC of human appendix using anti-CD4 antibody and FFPE tissue after heat-induced antigen retrieval. Anti-CD4 Ab at 1:750/DAB detection;



IHC of mouse spleen using anti-CD4 antibody and FFPE tissue after heat-induced antigen retrieval. Anti-CD4 Ab at 1:750/DAB detection;



IHC of mouse kidney carcinoma using anti-CD4 antibody and FFPE tissue after heat-induced antigen retrieval. Anti-CD4 Ab at 1:750/DAB detection;



IHC of mouse liver using anti-CD4 antibody and FFPE tissue after heat-induced antigen retrieval. Anti-CD4 Ab at 1:750/DAB detection;

For research use only, not for diagnostic use

SICGEN's Proprietary Immunogen Policy

In order to produce high specific antibodies SICGEN has invested a lot of time and effort into selecting immunogen sequences. SICGEN has decided to protect this information by not publishing it on the website. However, these sequences are available on request.