

**Catalogue No.**

AB0082-200

**Qty:**

600 µg

## Anti-Rab11b

**Source:** Goat

**General description:** Goat polyclonal antibody to mouse Rab11b. Rab11 belongs to the small GTPase superfamily, Rab family. The protein is membrane-bound and plays essential roles in vesicle and granule targeting. Similar to Rab11a, it has been shown that Rab11b associates with recycling endosomes.

**Alternative names:** GTP-binding protein YPT3; member of RAS oncogene family; ras-related protein Rab-11B antibody.

**Form:** Polyclonal antibody supplied as a 200 µl (3 mg/ml) aliquot in PBS, 20% glycerol and 0.05% sodium azide. This antibody is epitope-affinity purified from goat antiserum.

**Immunogen:** Purified recombinant peptide derived from within residues 120 aa to the C-terminus of mouse Rab11b produced in E. coli.

**Specificity:** Detects a band of 25 kDa by Western blot in the following human, rat and mouse whole cell lysates and transfected cells with GFP-Rab11b cds. This Ab is specific for Rab11b, it does not recognize Rab11a.

**Reactivity:** Reacts with Human, Rat, Mouse, Monkey and Canine proteins

Sample	WB	IHC (F)	IHC (P)	IF	ELISA
Human	+++	ND	ND	+++	ND
Rat	+++	ND	ND	+++	ND
Mouse	+++	ND	ND	+++	ND
Canine	+++	ND	ND	+++	ND
Monkey	+++	ND	ND	+++	ND

+++ excellent, ++ good, + poor, ND not determined

**Usage:**

WB: 1:250-1:2,000

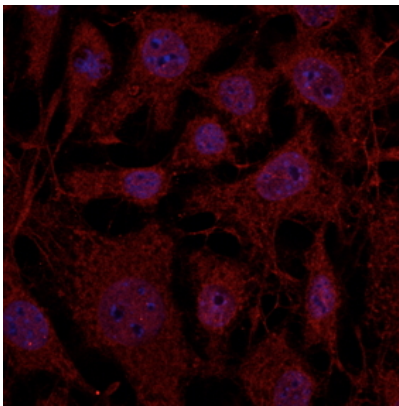
IF: 1:50-1:250  
IHC (P): 1:100-1:400  
IHC (F): 1:100-1:400

**Storage:** For continuous use, store at 2-8 C for one-two days. For extended storage, store in -20 C freezer. Working dilution samples should be discarded if not used within 12 hours.

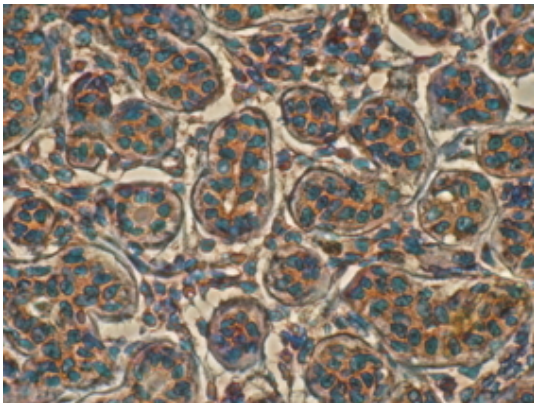
**Special instructions:** The antibody solution should be gently mixed before use..

### References:

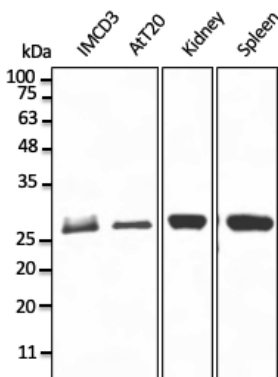
1. Cardoso MHS, PhD Thesis, NOVA University of Lisbon, Portugal 2018



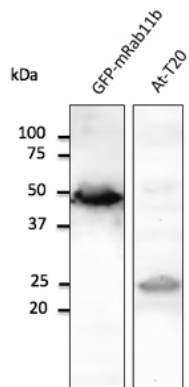
Immunofluorescence – anti-Rab11b Ab at 1/100 dilution in NHI/3T3 cells; cells were fixed with methanol and permeabilized with 0.1% saponin;



Anti-Rab11b antibody IHC staining of human mammary tissue; immunohistochemistry of formalin-fixed, paraffin-embedded tissue after heat-induced antigen retrieval; antibody concentration 1/200;



Anti-Rab11b Ab at 1:500 dilution; 50 ng of protein per lane; rabbit polyclonal to goat IgG (HRP) at 1/10,000 dilution;



Anti-Rab11b Ab at 1/500 dilution; HEK293 transduced with GFP-Rab11b lentivirus and At-T20 cell line; lysates at 100  $\mu$ g per lane; rabbit polyclonal to goat IgG (HRP) at 1/10,000 dilution;

For research use only, not for diagnostic use

#### SICGEN's Proprietary Immunogen Policy

In order to produce high specific antibodies SICGEN has invested a lot of time and effort into selecting immunogen sequences. SICGEN has decided to protect this information by not publishing it on the website. However, these sequences are available on request.