

Catalogue No.

 AB0081-200
 AB0081-500

Qty:

 600 µg
 1.5 mg

Anti-mCherry

Source: Goat

General description: Goat polyclonal antibody to mCherry (Cherry fluorescent protein). mCherry protein is derived from DsRed, an engineered red fluorescent protein from so-called disc corals of the genus *Discosoma*.

Alternative names: Cherry fluorescent protein; dsRed, red fluorescent protein, tdTomato antibody.

Form: Polyclonal antibody supplied as a 200 or 500 µl (3 mg/ml) aliquot in PBS, 20% glycerol and 0.05% sodium azide. This antibody is epitope-affinity purified from goat antiserum.

Immunogen: Purified recombinant peptide produced in *E. coli*.

Specificity: In 293HEK cells transfected with cds plasmid detects a band of 29 kDa by Western blot. This antibody (AB0081) recognizes very well tdTomato and does not cross-react to GFP (green fluorescent protein).

Reactivity: Reacts with Transfected cells proteins

Sample	WB	IHC (F)	IHC (P)	IF	ELISA	IEM
Transfected cells	+++	+++	+++	+++	ND	+++

+++ excellent, ++ good, + poor, ND not determined

Usage:

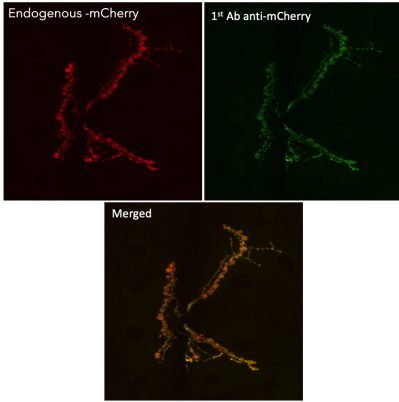
WB: 1:500-1:5,000
 IF: 1:50-1:500
 IHC (P): 1:50-1:500
 IHC (F): 1:50-1:500
 IEM: 1:50-1:500

Storage: For continuous use, store at 2-8 C for one-two days. For extended storage, store in -20 C freezer. Working dilution samples should be discarded if not used within 12 hours.

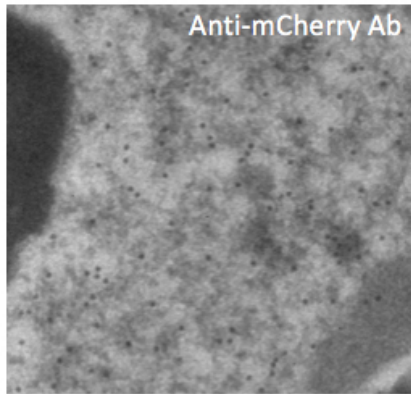
Special instructions: The antibody solution should be gently mixed before use..

References:

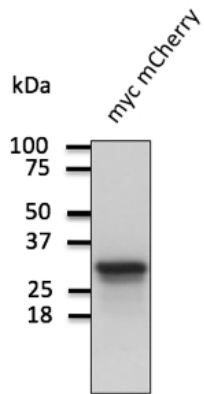
1. Steenbergen VV, Burattini L, Trumpp M, et al. *J Exp Med* 2023 PMID: 36571760
2. Kann AP, Hung M, Wang W, et al. *Cell Stem Cell* 2022 May PMID: 35597234
3. Rohrs KF, PhD Thesis, Germany, 2021
4. Lentini C, d'Orange M, Marichal N, et al. *Cell Stem Cell* 2021 Sep PMID: 34592167
5. Liu X, Chen H, Wang Y, et al. *Nat Commun* 2021 Sep PMID: 34580314
6. Do JL, Allahwerdy S, David RCC, et al. *Invest Ophthalmol Vis Sci* 2021 Jul PMID: 34283208
7. Kremer LPM, Cerrizuela S, Dehler S, et al. *Molecular Therapy-Methods* 2021 Jul PMID: 34553001
8. Stewart S, Le Bleu HK, Yette GA, et al. *Development* 2021 Jun PMID: 34061172
9. Bernau K, Leet JP, Bruhn EM, et al. *Am J Physiol Lung Cell Mol Physiol* 2021 May PMID: 33978489
10. Erickson EK, DaCosta AJ, Mason SC, et al. *Neuropsychopharmacology* 2021 Feb PMID: 32464636
11. Hou Y, Zhang Q, Liu H, et al. *Cell Rep* 2021 Feb PMID: 33567285
12. Liu H, Caballero-Florán RN, Yang T, et al. *bioRxiv* 2020
13. Liu H. PhD Thesis, University of Michigan, United States 2020
14. Labus J, Röhrs KF, Ackmann J, et al. *Prog Neurobiol* 2020 Aug PMID: 32841723
15. Brandalise F, Kalmbach BE, Mehta P, et al. *J Neurosci* 2020 May. PMID: 32467357
16. Al-Saad RZ, Kerr I, Hume AN. *ASSAY and Drug Development Technologies* 2020 May PMID: 32384245
17. Galegos CM. Master Thesis. University of Texas, USA, 2020
18. Luo H, Liu HZ, Zhang WW, et al. *Cell Rep* 2019 Nov PMID: 31747607
19. Stewart S, Le Bleu HK, Yette GA, et al. *bioRxiv* Oct 2019
20. Marin-Mogollon C, Salman AM, Koolen KMJ, et al. *Front Cell Infect Microbiol* 2019 Apr PMID: 31058097
21. Saito YC, Maejima T, Nishitani M, et al. *J Neurosci* 2018 Jul PMID: 29915137
22. Cattaud V, PhD Thesis, University of Toulouse, France 2018
23. Raven AP, PhD Thesis, Edinburg University, United Kingdom 2018
24. Saito K, Nobuhisa I, Harada K et al. *Exp Cell Res* 2018 Feb PMID: 29458175
25. Soya S, Takahashi TM, McHugh TJ, et al. *Nat Commun* 2017 Nov PMID: 29151577
26. Fiuza M, Rostovsky CM, Parkinson GT, et al. *J Cell Biol* 2017 Aug PMID: 28855251
27. Hasegawa E, Maejima T, Yoshida T et al. *Proc Natl Acad Sci U S A* 2017 Apr PMID: 28396432
28. Zhang-Hooks Y, Agarwal A, Mishina M, et al. *Neuron* 2016 Jan. Supplemental Information PMID: 26774161
29. Stykel MG, MSc Thesis, University of Calgary 2016
30. Nakatsukasa K, Nishimura T, Byrne SD, et al. *Mol Cell* 2015 Jul. Supplemental Information PMID: 25982115
31. Julkowska MM, McLoughlin F, Galvan-Ampudia CS, et al. *Plant Cell Environ* 2015 Mar PMID: 25074439
32. Okorochoa AE, PhD Thesis, University of Leicester, United Kingdom, 2015
33. Déglon N, Merienne N, Genome editing for the treatment of huntington's disease, EP 2982758 A1 Patent, 2014
34. Benske A, MSc Thesis, The University of British Columbia, Canada, 2014
35. Symons RA, Colella F, Collins FL, et al. *Ann Rheum Dis* 2021 Nov PMID: 34844926
36. Liu H, Caballero-Florán RN, Hergenreder T et al. *PLoS Biol* 2023 Apr PMID: 37079499



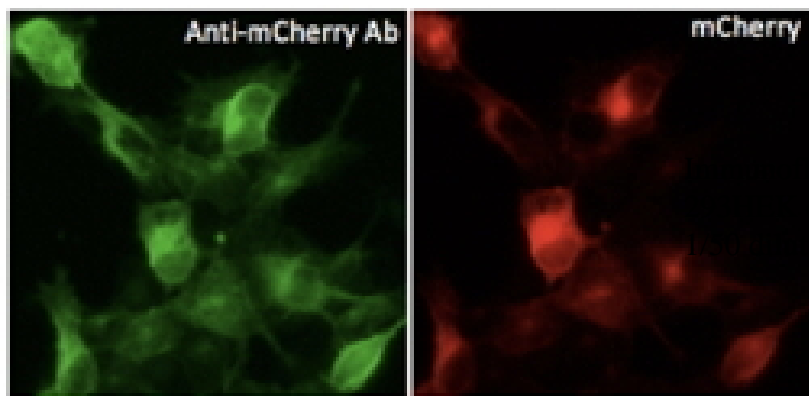
Immunofluorescence in *Drosophila* larvae NMJ muscle 6/7 expressing mCherry in neurons (DyGlutmCherry) using 1st Ab anti-mCherry at 1/1,000 and 2nd Ab anti-goat IgY conjugated to DyLight®488 at 1/500;



Immunogold labeling of RPE, in vivo injected with mCherry expressing vector;



anti-mCherry Ab at 1/1,000 dilution; 293HEK cells transduced with myc-mCherry Ad; lysates at 100 µg per lane; rabbit polyclonal to goat IgG (HRP) at 1/10,000 dilution;



Immunofluorescence – anti-mCherry Ab in cells transfected with mCherry-Rab1a at 1/1,000 dilution; cells were fixed with 4% of PFA;

For research use only, not for diagnostic use

In order to produce high specific antibodies SICGEN has invested a lot of time and effort into selecting immunogen sequences. SICGEN has decided to protect this information by not publishing it on the website. However, these sequences are available on request.