

Catalogue No.

AB0076-200

Qty:

600 µg

Anti-Rab8b

Source: Goat

General description: Goat polyclonal antibody to Rab8. Rab8 belongs to the small GTPase superfamily, Rab family. It has cell-type specific function during the process of exocytosis and coordinates regulation of the cytoskeleton. Rab8 also appears to interface with endocytic recycling circuits. At the molecular level, this GTPase regulates both the export of vesicles from the trans-Golgi apparatus, and the directed translocation along actin filaments and microtubules.

Alternative names: RAB8A, RAB8B, RAS-associated protein RAB8A, ras-related protein Rab-8B, ras-related protein Rab-8A, ras-related protein Rab-8B antibody.

Form: Polyclonal antibody supplied as a 200 µl (3 mg/ml) aliquot in PBS, 20% glycerol and 0.05% sodium azide. This antibody is epitope-affinity purified from goat antiserum.

Immunogen: Purified recombinant peptide derived from within residues 107 aa to the C-terminus of mouse Rab8b produced in E. coli.

Specificity: Detects Rab8b protein in transfected cells with GFP-Rab8b cds by Western blot. This Ab is specific for Rab8b. It does not recognize Rab8a.

Reactivity: Reacts with Human, Rat, Mouse, Monkey and Canine proteins

| Sample | WB | IHC (F) | IHC (P) | IF | ELISA |
|--------|-----|---------|---------|----|-------|
| Human | +++ | ND | ND | ND | ND |
| Rat | +++ | ND | ND | ND | ND |
| Mouse | +++ | ND | ND | ND | ND |
| Canine | +++ | ND | ND | ND | ND |
| Monkey | +++ | ND | ND | ND | ND |

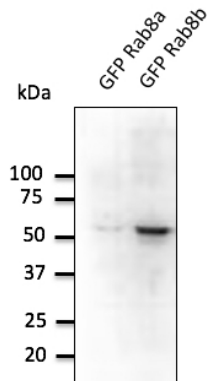
+++ excellent, ++ good, + poor, ND not determined

Usage:

WB: 1:250-1:1,000

Storage: For continuous use, store at 2-8 C for one-two days. For extended storage, store in -20 C freezer. Working dilution samples should be discarded if not used within 12 hours.

Special instructions: The antibody solution should be gently mixed before use..



Anti-Rab8b Ab at 1/500 dilution; lysates at 20 µg per lane; rabbit polyclonal to goat IgG (HRP) at 1/10,000 dilution;

For research use only, not for diagnostic use

SICGEN's Proprietary Immunogen Policy

In order to produce high specific antibodies SICGEN has invested a lot of time and effort into selecting immunogen sequences. SICGEN has decided to protect this information by not publishing it on the website. However, these sequences are available on request.