

Catalogue No.

AB0075-200

Qty:

600 µg

Anti-Rab28

Source: Goat

General description: RAB28 belongs to the large RAB family of low molecular weight GTPases that are involved in intracellular membrane trafficking.

Alternative names: N/A

Form: Polyclonal antibody supplied as a 200 µl (3 mg/ml) aliquot in PBS, 20% glycerol and 0.05% sodium azide. This antibody is epitope-affinity purified from goat antiserum.

Immunogen: Purified recombinant peptide derived from within residues 120 aa to the C-terminus of mouse Rab28 produced in E. coli.

Specificity: Detects Rab28 by Western blot in transfected cells with GFP-Rab28.

Reactivity: Reacts with Human, Rat, Mouse, Monkey and Canine proteins

Sample	WB	IHC (F)	IHC (P)	IF	ELISA
Human	+++	ND	ND	+++	ND
Rat	+++	ND	ND	+++	ND
Mouse	+++	ND	ND	+++	ND
Monkey	+++	ND	ND	+++	ND
Canine	+++	ND	ND	+++	ND

+++ excellent, ++ good, + poor, ND not determined

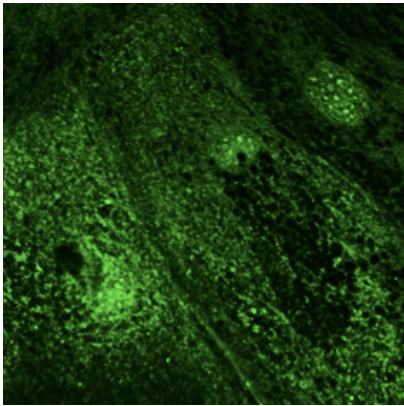
Usage:

WB: 1:250-1:2,000

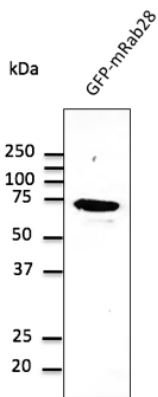
IF: 1:25-1:250

Storage: For continuous use, store at 2-8 C for one-two days. For extended storage, store in -20 C freezer. Working dilution samples should be discarded if not used within 12 hours.

Special instructions: The antibody solution should be gently mixed before use..



Confocal immunofluorescence of primary RPE cells with Rab28 Ab at 1/100 dilution;



Anti-Rab28 Ab at 1/1,000 dilution; HEK293 cells transfected with GFP-Rab28; lysates at 50 µg per lane; rabbit polyclonal to goat IgG (HRP) at 1/10,000 dilution;

For research use only, not for diagnostic use

SICGEN's Proprietary Immunogen Policy

In order to produce high specific antibodies SICGEN has invested a lot of time and effort into selecting immunogen sequences. SICGEN has decided to protect this information by not publishing it on the website. However, these sequences are available on request.