

Catalogue No.

AB0071-200

Qty:

600 µg

Anti-CDH2

Source: Goat

General description: Goat polyclonal to CDH2. CDH2 is a classical member of the cadherin superfamily. This protein is a calcium dependent cell-cell adhesion glycoprotein comprised consists of 5 cadherin repeats in the extracellular domain, one trans membrane domain, and a highly conserved intracellular domain. It has been shown to play an essential role in normal neuronal development, which is implicated in an array of processes including neuronal differentiation, migration, axon growth and fasciculation.

Alternative names: cadherin 2, cadherin-2, CD325, CDHN, CDw325, CDH2, NCAD, N-cadherin, N-cadherin 1, neural cadherin, neural-cadherin, neural cadherin (NCAD) antibody.

Form: Polyclonal antibody supplied as a 200 µl (3 mg/ml) aliquot in PBS, 20% glycerol and 0.05% sodium azide. This antibody is epitope-affinity purified from goat antiserum.

Immunogen: Purified recombinant peptide derived from within residues 850 aa to C-terminus of human CDH2 produced in E. coli.

Specificity: Detects endogenous levels of total N-cadherin protein by Western blot in the whole cell lysates (COS-7, HeLa, HUH and Hepa-6).

Reactivity: Reacts with Human, Rat, Mouse, Monkey and Canine proteins

Sample	WB	IHC (F)	IHC (P)	IF	ELISA
Human	+++	ND	ND	+++	ND
Rat	+++	ND	ND	+++	ND
Mouse	+++	ND	ND	+++	ND
Canine	+++	ND	ND	+++	ND
Monkey	+++	ND	ND	+++	ND

+++ excellent, ++ good, + poor, ND not determined

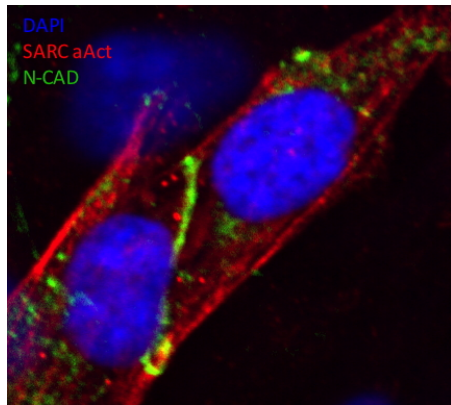
Usage:

WB: 1:500-1:2,000

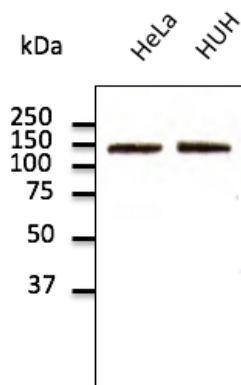
IF: 1:25-1:250

Storage: For continuous use, store at 2-8 C for one-two days. For extended storage, store in -20 C freezer. Working dilution samples should be discarded if not used within 12 hours.

Special instructions: The antibody solution should be gently mixed before use..



N-Cadherin antibody marking the intercalated disks (distal cell junctions in heart tissue – green line in the middle) of Human iPS-derived cardiomyocytes; Methanol fixation; DAPI: DNA (nuclear) stain, SARC aAct: Sarcomeric α -Actinin, N-CAD: N-Cadherin This image is courtesy of Dr Zanella F (University of California)



Endogenous CDH2 detected with at 1/500 dilution; lysates at 100 μ g per lane and rabbit polyclonal to goat IgG (HRP) at 1/10,000 dilution;

For research use only, not for diagnostic use

SICGEN's Proprietary Immunogen Policy

In order to produce high specific antibodies SICGEN has invested a lot of time and effort into selecting immunogen sequences. SICGEN has decided to protect this information by not publishing it on the website. However, these sequences are available on request.