

Catalogue No.

AB0056-200

Qty:

600 µg

Anti-Rab9a

Source: Goat

General description: Goat polyclonal antibody to Rab9a. Rab9a belongs to the small GTPase superfamily, Rab family. This protein may be involved in endosome-to-Golgi transport.

Alternative names: RAB9, RAB9A, member RAS oncogene family, ras-related protein Rab-9A antibody.

Form: Polyclonal antibody supplied as a 200 µl (3 mg/ml) aliquot in PBS, 20% glycerol and 0.05% sodium azide. This antibody is epitope-affinity purified from goat antiserum.

Immunogen: Purified recombinant peptide derived from within residues 115 aa to the C-terminus of Rab9a produced in E. coli.

Specificity: Rab9a antibody detects endogenous levels of Rab9a protein and transfected cells with GFP-Rab9a cds.

Reactivity: Reacts with Human, Rat, Mouse, Monkey and Canine proteins

| Sample | WB | IHC (F) | IHC (P) | IF | ELISA |
|--------|-----|---------|---------|----|-------|
| Human | +++ | ND | ND | ND | ND |
| Rat | +++ | ND | ND | ND | ND |
| Mouse | +++ | ND | ND | ND | ND |
| Canine | +++ | ND | ND | ND | ND |
| Monkey | +++ | ND | ND | ND | ND |

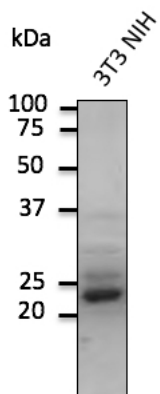
+++ excellent, ++ good, + poor, ND not determined

Usage:

WB: 1:250-1:2,000

Storage: For continuous use, store at 2-8 C for one-two days. For extended storage, store in -20 C freezer. Working dilution samples should be discarded if not used within 12 hours.

Special instructions: The antibody solution should be gently mixed before use. Avoid freeze/thaw cycles..



Anti-Rab9a Ab at 1/500 dilution; 3T3 NIH cell line lysates at 100 µg per lane; rabbit polyclonal to goat IgG (HRP) at 1/10,000 dilution;

For research use only, not for diagnostic use

SICGEN's Proprietary Immunogen Policy

In order to produce high specific antibodies SICGEN has invested a lot of time and effort into selecting immunogen sequences. SICGEN has decided to protect this information by not publishing it on the website. However, these sequences are available on request.