

**Catalogue No.**

AB0055-200

**Qty:**

400 µg

## Anti-CAV1

**Source:** Goat

**General description:** Goat polyclonal to Caveolin-1 – caveolae marker. This scaffolding protein is the main component of the caveolae plasma membranes found in most cell types. The protein links integrin subunits to the tyrosine kinase FYN, an initiating step in coupling integrins to the Ras-ERK pathway and promoting cell cycle progression.

**Alternative names:** CAV1, caveolin, caveolae protein 1, cell growth-inhibiting protein 32 antibody.

**Form:** Polyclonal antibody supplied as a 200 µl (2 mg/ml) aliquot in PBS, 20% glycerol and 0.05% sodium azide. This antibody is epitope-affinity purified from goat antiserum.

**Immunogen:** Purified recombinant peptide derived from within residues 100 aa to the N-terminus of human CAV1 produced in E. coli.

**Specificity:** Detects a band of approximately 25 kDa by Western blot in the following cell lysate: hCat, MDCK and 3T3.

**Reactivity:** Reacts with Human, Rat, Mouse, Monkey and Canine proteins

Sample	WB	IHC (F)	IHC (P)	IF	ELISA
Human	+++	+++	+++	+++	ND
Rat	+++	+++	+++	+++	ND
Mouse	+++	+++	+++	+++	ND
Canine	+++	+++	+++	+++	ND
Monkey	+++	+++	+++	+++	ND

+++ excellent, ++ good, + poor, ND not determined

**Usage:**

WB: 1:500-1:2,000

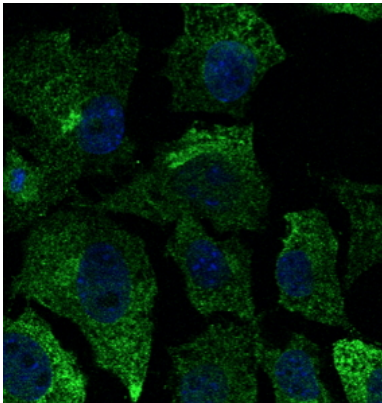
IF: 1:25-1:250

IHC (P): 1:200-1:1,000

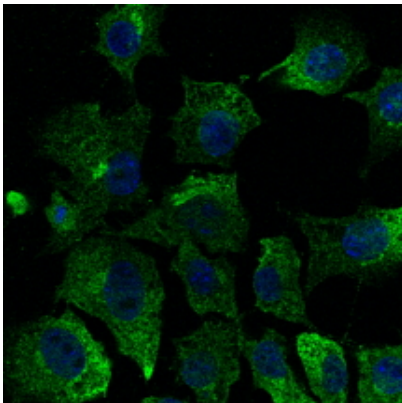
IHC (F): 1:200-1:1,000

**Storage:** For continuous use, store at 2-8 C for one-two days. For extended storage, store in -20 C freezer. Working dilution samples should be discarded if not used within 12 hours.

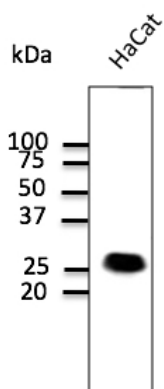
**Special instructions:** The antibody solution should be gently mixed before use. Avoid freeze/thaw cycles..



Immunofluorescence – anti-CAV1 Ab - Caveolae Marker in Hepa1-6 cells at 1/50 dilution; cells were fixed with 4% of PFA;



Immunofluorescence – anti-CAV1 Ab - Caveolae Marker in Hepa1-6 cells at 1/50 dilution; cells were fixed with 4% of PFA;



Anti-CAV1 Ab at 1/1,000 dilution; 100 µg lysate per lane; rabbit polyclonal to goat IgG (HRP) at 1/10,000 dilution;

For research use only, not for diagnostic use

#### SICGEN's Proprietary Immunogen Policy

In order to produce high specific antibodies SICGEN has invested a lot of time and effort into selecting immunogen sequences. SICGEN has decided to protect this information by not publishing it on the website. However, these sequences are available on request.