

**Catalogue No.**

AB0054-200

**Qty:**

600 µg

## Anti-ZO1

**Source:** Goat

**General description:** Goat polyclonal to TJP1 tight junction protein 1 (TJP1). TJP1 is located on a cytoplasmic membrane surface of intercellular tight junctions and may be involved in signal transduction at cell-cell junctions.

**Alternative names:** ZO-1 and zona occludens protein 1 antibody.

**Form:** Polyclonal antibody supplied as a 200 µl (3 mg/ml) aliquot in PBS, 20% glycerol and 0.05% sodium azide. This antibody is epitope-affinity purified from goat antiserum.

**Immunogen:** Purified recombinant peptide derived from within residues 1580 aa to the C-terminus of human ZO-1 produced in E. coli.

**Specificity:** Detects endogenous levels of total ZO1 by Western blot in whole cell and tissue lysates.

**Reactivity:** Reacts with Human, Rat, Mouse, Monkey and Canine proteins

Sample	WB	IHC (F)	IHC (P)	IF	ELISA
Human	+++	+++	+++	+++	ND
Rat	+++	+++	+++	+++	ND
Mouse	+++	+++	+++	+++	ND
Canine	+++	+++	+++	+++	ND
Monkey	+++	+++	+++	+++	ND

+++ excellent, ++ good, + poor, ND not determined

**Usage:**

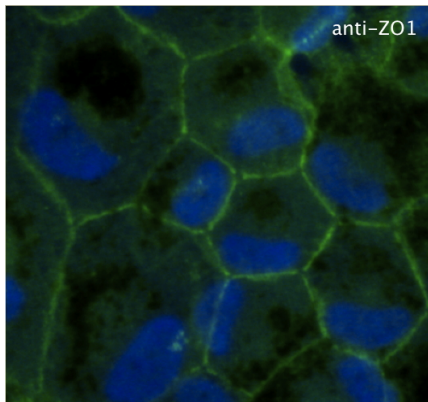
WB: 1:500-1:2,000  
IF: 1:50-1:250  
IHC (P): 1:200-1:1,000  
IHC (F): 1:200-1:1,000

**Storage:** For continuous use, store at 2-8 C for one-two days. For extended storage, store in -20 C freezer. Working dilution samples should be discarded if not used within 12 hours.

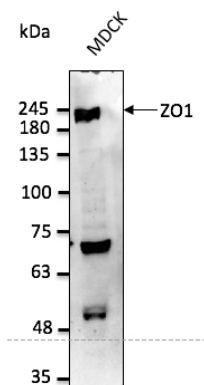
**Special instructions:** The antibody solution should be gently mixed before use. Avoid freeze/thaw cycles..

## References:

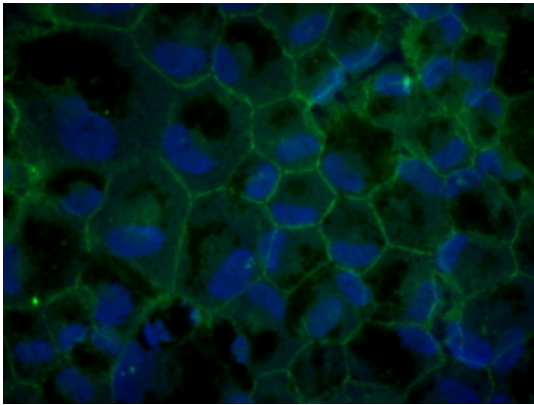
1. Cardoso MHS, PhD Thesis, NOVA University of Lisbon, Portugal 2018
2. Pelkonen L, Sato K, Reinisalo M, et al. Mol Pharm. 2017 Mar 6. Supplemental Material. PMID: 28112518



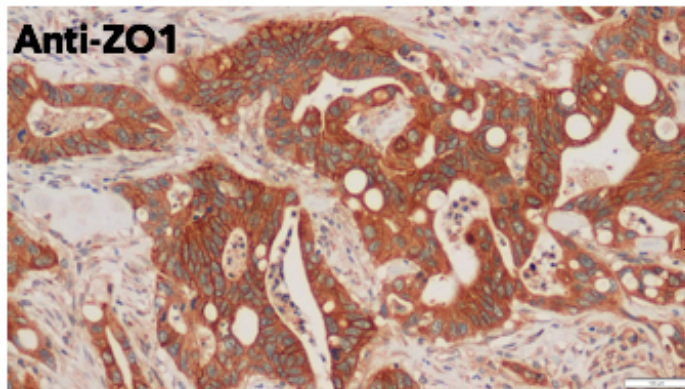
Immunofluorescence of primary RPE cells with ZO1 Ab at 1/100 dilution;



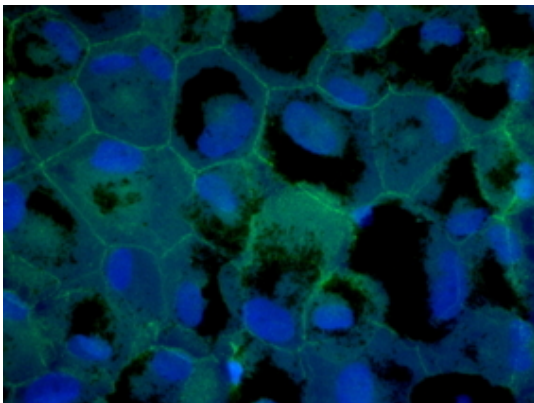
Anti-ZO1 Ab at 1/2,500 dilution; 50 µg of total protein per lane; rabbit polyclonal to goat IgG (HRP) at 1/10,000 dilution;



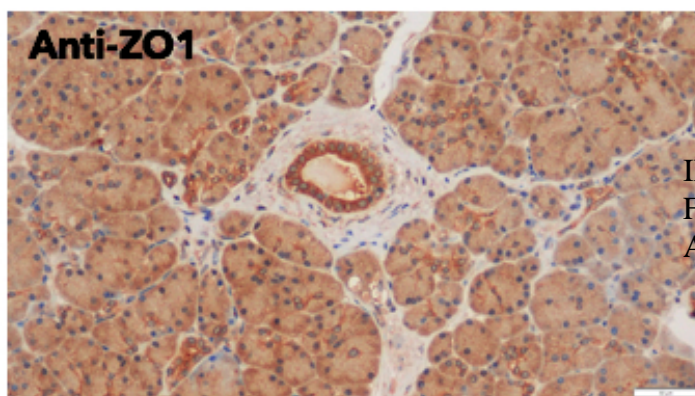
Immunofluorescence of primary RPE cells with ZO1 Ab at 1/100 dilution;



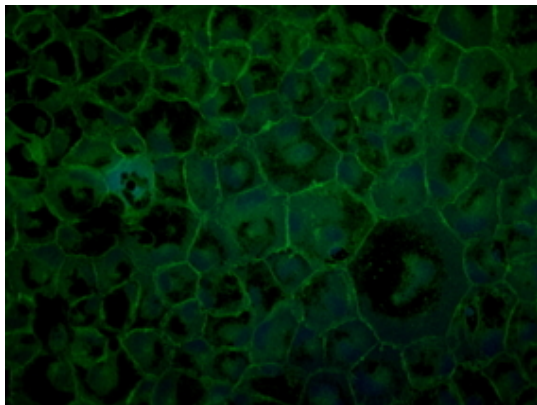
IHC of human pancreas using ZO1 antibody and FFPE tissue after heat-induced antigen retrieval. Anti-ZO1 Ab at 1:750/DAB detection;



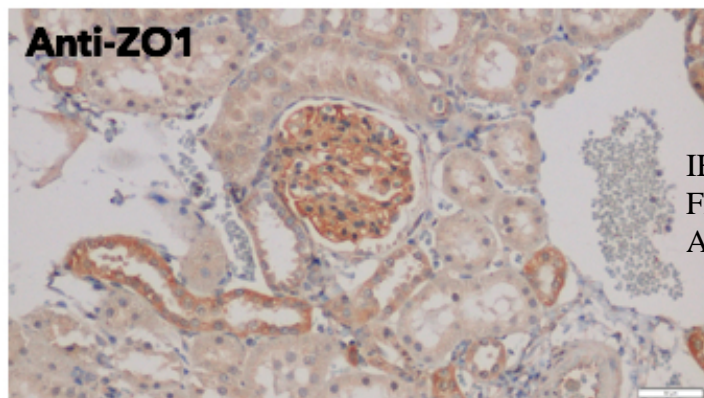
Immunofluorescence of primary RPE cells with ZO1 Ab at 1/100 dilution;



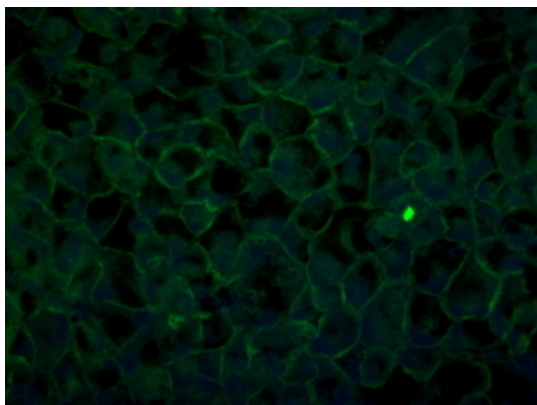
IHC of human pancreas using ZO1 antibody and FFPE tissue after heat-induced antigen retrieval. Anti-ZO1 Ab at 1:750/DAB detection;



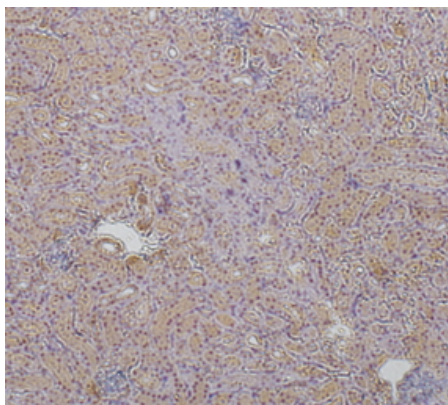
Immunofluorescence of primary RPE cells with ZO1 Ab at 1/100 dilution;



IHC of mouse kidney using ZO1 antibody and FFPE tissue after heat-induced antigen retrieval. Anti-ZO1 Ab at 1:750/DAB detection;



Immunofluorescence of primary RPE cells with ZO1 Ab at 1/100 dilution;



Immunoperoxidase of polyclonal antibody to ZO1 (1/200) on paraformaldehyde-fixed paraffin-embedded mouse kidney;

For research use only, not for diagnostic use

In order to produce high specific antibodies SICGEN has invested a lot of time and effort into selecting immunogen sequences. SICGEN has decided to protect this information by not publishing it on the website. However, these sequences are available on request.