

Catalogue No.

AB0048-100

Qty:

300 µg

Anti-Azurin

Source: Goat

General description: Goat polyclonal antibody to Azurin. This protein is a redox partner for enzymes such as nitrite reductase or arsenite oxidase. It transfers electrons from cytochrome c551 to cytochrome oxidase.

Alternative names: azu antibody

Form: Polyclonal antibody supplied as a 100 µl (3 mg/ml) aliquot in PBS, 20% glycerol and 0.05% sodium azide. This antibody is epitope-affinity purified from goat antiserum.

Immunogen: Purified recombinant Burkholderia azurin protein produced in E. coli.

Specificity: Detects azurin by Western blot.

Reactivity: Reacts with Bacteria proteins

Sample	WB	IHC (F)	IHC (P)	IF	ELISA
Bacteria	+++	ND	ND	ND	ND

+++ excellent, ++ good, + poor, ND not determined

Usage:

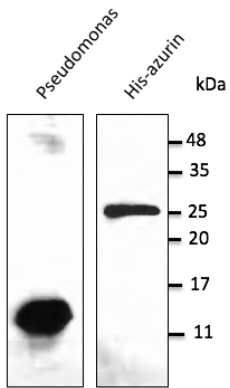
WB: 1:500-1:5,000

Storage: For continuous use, store at 2-8 C for one-two days. For extended storage, store in -20 C freezer. Working dilution samples should be discarded if not used within 12 hours.

Special instructions: The antibody solution should be gently mixed before use. Avoid freeze/thaw cycles..

References:

1. Unver Y, Gun BS, Acar M, et al. Prep Biochem Biotechnol 2020 Dec PMID: 33346686
2. Yildiz M, Askin H. Prep Biochem Biotechnol 2019 Jun PMID: 31156029
3. Paydarnia N, Khoshtinat Nikkhai S, Fakhravar A, et al. Mol Biol Rep. 2019 Jun PMID: 30937652
4. Kalakenger S, Arslan SY, Turhan F, et al. Mol Biotechnol 2023 Jun PMID: 37378861



Anti-azurin Ab at 1/2,500 dilution; 100 μ g of total protein or 50 ng of recombinant protein per lane; rabbit polyclonal to goat IgG (HRP) at 1/10,000 dilution;

For research use only, not for diagnostic use

SICGEN's Proprietary Immunogen Policy

In order to produce high specific antibodies SICGEN has invested a lot of time and effort into selecting immunogen sequences. SICGEN has decided to protect this information by not publishing it on the website. However, these sequences are available on request.