

Catalogue No.

AB0046-200
AB0046-500

Qty:

400 µg
1 mg

Anti-TUBA4A

Source: Goat

General description: Goat polyclonal antibody to alpha tubulin. Microtubules of the eukaryotic cytoskeleton perform essential and diverse functions and are composed of a heterodimer of alpha and beta tubulin. The alpha and beta tubulins represent the major components of microtubules, while gamma tubulin plays a critical role in the nucleation of microtubule assembly.

Alternative names: TUBA1, TUBA4A antibody.

Form: Polyclonal antibody supplied as a 200 or 500 µl (2 mg/ml) aliquot in PBS, 20% glycerol and 0.05% sodium azide. This antibody is epitope-affinity purified from goat antiserum.

Immunogen: Purified recombinant peptide derived from within residues 400 aa to the C-terminus of human alpha tubulin produced in E. coli.

Specificity: This antibody gives a positive signal in the following human (293A, HMEC-1, U-118, HaCat), rat (TR-iBRB), mouse (AtT-20, Hepa), canine (D17) and monkey (COS-7) whole cell lysates.

Reactivity: Reacts with Human, Rat, Mouse, Monkey and Canine proteins

Sample	WB	IHC (F)	IHC (P)	IF	ELISA
Human	+++	ND	ND	+++	ND
Rat	+++	ND	ND	+++	ND
Mouse	+++	ND	ND	+++	ND
Canine	+++	ND	ND	+++	ND
Monkey	+++	ND	ND	+++	ND

+++ excellent, ++ good, + poor, ND not determined

Usage:

WB: 1:250-1:2,000

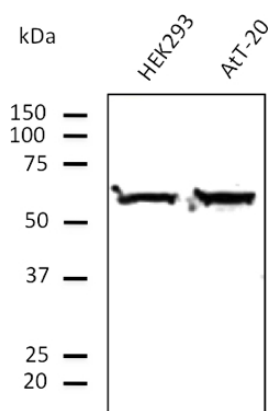
IF: 1:50-1:200

Storage: For continuous use, store at 2-8 C for one-two days. For extended storage, store in -20 C freezer. Working dilution samples should be discarded if not used within 12 hours.

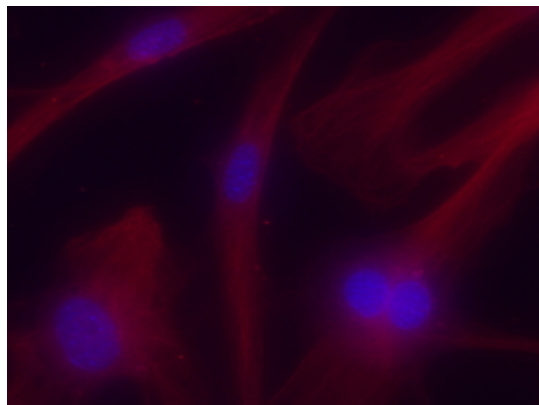
Special instructions: The antibody solution should be gently mixed before use. Avoid freeze/thaw cycles..

References:

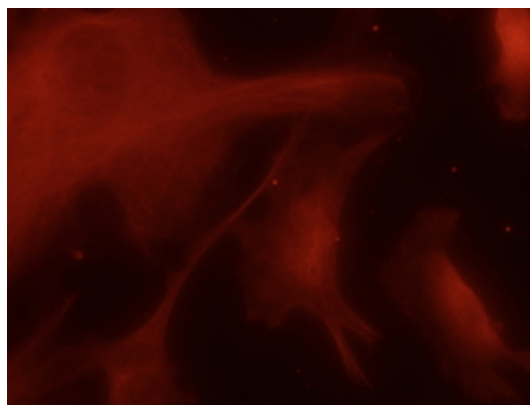
1. Ferreira JV, Soares AR, Ramalho J, et al. Sci Adv 2022 Mar PMID: 35333565
2. Saviano A, De Vita S, Chini MG, et al. Biomolecules 2022 Jan PMID: 35053247
3. Ferreira JV, Rosa Soares A, Ramalho JS, et al. PLoS One 2019 Oct. PMID: 31613922
4. Goncalves SMM, PhD Thesis, University of Minho, Portugal 2015



Anti-Tubulin alpha4A Ab at 1/1,000 dilution;
lysates at 100 µg per lane; Rabbit polyclonal to goat
IgG (HRP) at 1/10,000 dilution;



Immunofluorescence – anti-Tubulin alpha4A Ab -
Microtubule Marker in mouse embryonic fibroblasts
at 1/50 dilution;



Immunofluorescence – anti-Tubulin alpha4A Ab -
Microtubule Marker in mouse embryonic fibroblasts
at 1/50 dilution;

For research use only, not for diagnostic use

SICGEN's Proprietary Immunogen Policy

In order to produce high specific antibodies SICGEN has invested a lot of time and effort into selecting immunogen sequences. SICGEN has decided to protect this information by not publishing it on the website. However, these sequences are available on request.