

Catalogue No.

AB0045-200

Qty:

400 µg

Anti-Rab27a

Source: Goat

General description: Goat polyclonal antibody to mouse Rab27a. Rab27a belongs to the small GTPase superfamily, Rab family. The protein is membrane-bound and involved in lysosome-related vesicle transport and small GTPase mediated signal transduction.

Alternative names: GS2, GTP-binding protein Ram, rab-27, ras-related protein Rab-27A, RAB27, RAM.

Form: Polyclonal antibody supplied as a 200 µl (2 mg/ml) aliquot in PBS, 20% glycerol and 0.05% sodium azide. This antibody is epitope-affinity purified from goat antiserum.

Immunogen: Purified recombinant peptide derived from within residues 120 aa to the C-terminus of mouse Rab27a produced in E. coli.

Specificity: Detects Rab27a by Western blot in the following human, rat and mouse whole cell lysates and transfected cells with GFP-Rab27a. This antibody is specific for Rab27a. It does not recognize Rab27b protein.

Reactivity: Reacts with Human, Rat, Mouse, Monkey and Canine proteins

Sample	WB	IHC (F)	IHC (P)	IF	ELISA
Human	+++	+++	+++	+++	ND
Rat	+++	+++	+++	+++	ND
Mouse	+++	+++	+++	+++	ND
Canine	+++	+++	+++	+++	ND
Monkey	+++	+++	+++	+++	ND

+++ excellent, ++ good, + poor, ND not determined

Usage:

WB: 1:250-1:2,000

IF: 1:50-1:200

IHC (P): 1:50-1:400

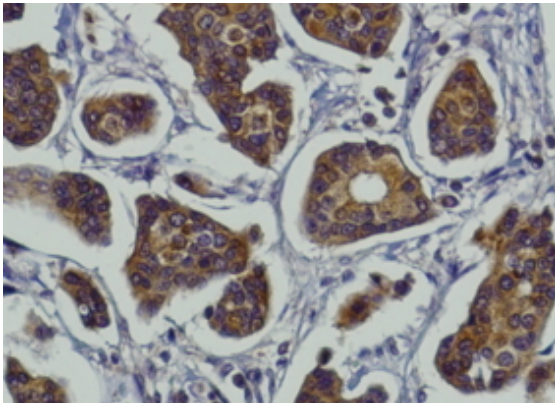
IHC (F): 1:50-1:400

Storage: For continuous use, store at 2-8 C for one-two days. For extended storage, store in -20 C freezer. Working dilution samples should be discarded if not used within 12 hours.

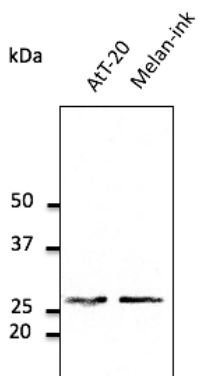
Special instructions: The antibody solution should be gently mixed before use. Avoid freeze/thaw cycles..

References:

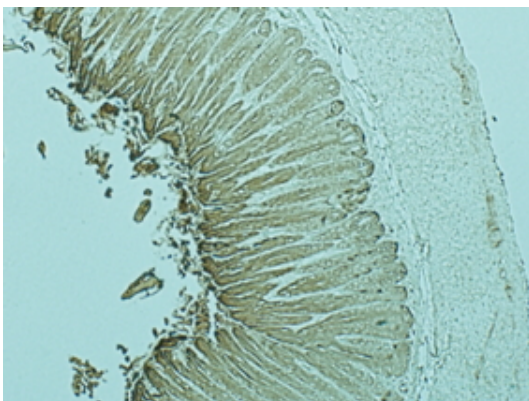
1. Ramsay E, Ravina M, Sarkhel S, et al. *Pharmaceutics* 2020 Jul PMID: 32708811
2. Domingues L, Hurbain I, Gilles-Marsens F, et al. *Nat Commun* 2020 Jun PMID: 32532976
3. Domingues L, Hurbain I, Gilles-Marsens F, et al. *bioRxiv* 2019
4. Cardoso MHS, PhD Thesis, NOVA University of Lisbon, Portugal 2018



Anti-Rab27a antibody IHC staining of mammary tissue; immunohistochemistry of formalin-fixed, paraffin-embedded tissue after heat-induced antigen retrieval; antibody concentration 1/200;



Anti-Rab27 Ab at 1/500 dilution; lysates at 50 µg per lane; rabbit polyclonal to goat IgG (HRP) at 1/10,000 dilution;



Anti-Rab27a antibody IHC staining of mouse stomach; immunohistochemistry of formalin-fixed, paraffin-embedded tissue after heat-induced antigen retrieval; Antibody concentration 1/200;

For research use only, not for diagnostic use

SICGEN's Proprietary Immunogen Policy

In order to produce high specific antibodies SICGEN has invested a lot of time and effort into selecting immunogen sequences. SICGEN has decided to protect this information by not publishing it on the website. However, these sequences are available on request.