

Catalogue No.

AB0035-200

Qty:

400 µg

Anti-Rab25

Source: Goat

General description: RAB25 belongs to the large RAB family of low molecular weight GTPases that are involved in intracellular membrane trafficking. Members of the RAB11 subfamily, including RAB25, control the return of internalized membrane-associated moieties to the cell surface.

Alternative names: CATX-8, RAB11C antibody.

Form: Polyclonal antibody supplied as a 200 µl (2 mg/ml) aliquot in PBS, 20% glycerol and 0.05% sodium azide. This antibody is epitope-affinity purified from goat antiserum.

Immunogen: Purified recombinant peptide derived from within residues 120 aa to the C-terminus of mouse Rab25 produced in E. coli.

Specificity: Detects Rab25 by Western blot in transfected cells with GFP-Rab25.

Reactivity: Reacts with Human, Rat, Mouse, Monkey and Canine proteins

Sample	WB	IHC (F)	IHC (P)	IF	ELISA
Human	+++	+++	+++	+++	ND
Rat	+++	+++	+++	+++	ND
Mouse	+++	+++	+++	+++	ND
Canine	+++	+++	+++	+++	ND
Monkey	+++	+++	+++	+++	ND

+++ excellent, ++ good, + poor, ND not determined

Usage:

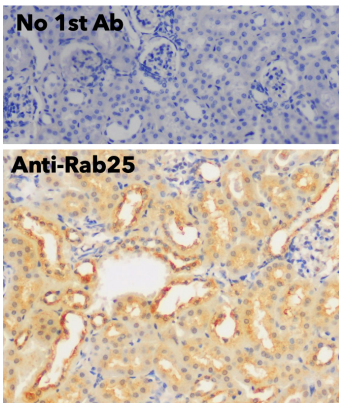
WB: 1:250-1:2,000
IF: 1:25-1:250
IHC (P): 1:200-1:1:1,000
IHC (F): 1:200-1:1:1,000

Storage: For continuous use, store at 2-8 C for one-two days. For extended storage, store in -20 C freezer. Working dilution samples should be discarded if not used within 12 hours.

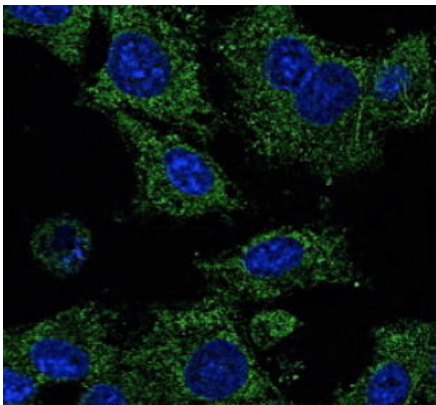
Special instructions: The antibody solution should be gently mixed before use..

References:

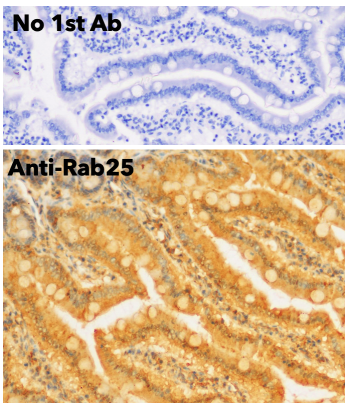
1.



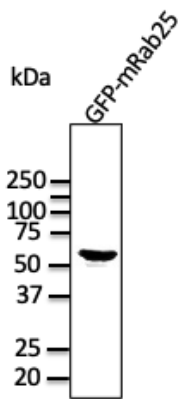
IHC of mouse kidney using anti-Rab25 antibody and FFPE tissue after heat-induced antigen retrieval; Anti-Rab25 Ab at 1:750/DAB detection;



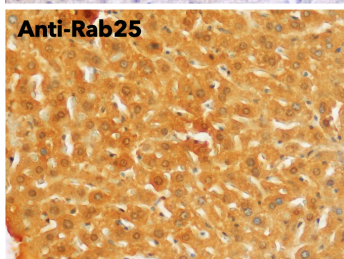
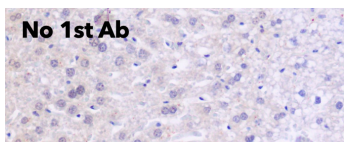
Immunofluorescence – anti-Rab25 Ab in Hepa1-6 cells at 1/50 dilution; methanol fixation;



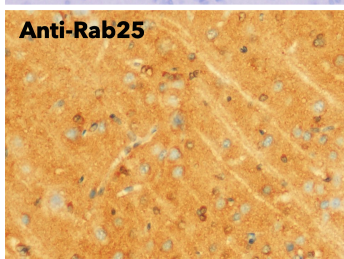
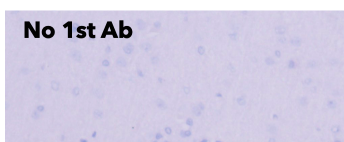
IHC of mouse intestine using anti-Rab25 antibody and FFPE tissue after heat-induced antigen retrieval; Anti-Rab25 Ab at 1:750/DAB detection;



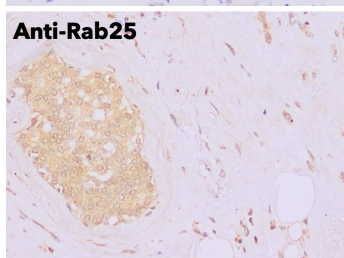
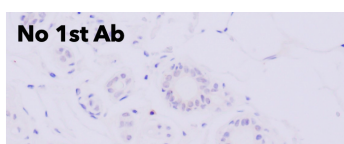
Anti-Rab25 Ab at 1/1,000 dilution; HEK293 cells transfected with GFP-Rab25; rabbit polyclonal to goat IgG (HRP) at 1/10,000 dilution;



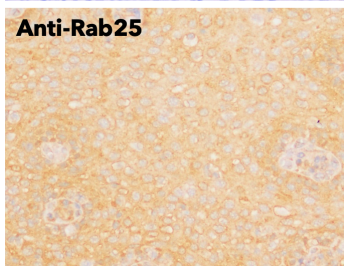
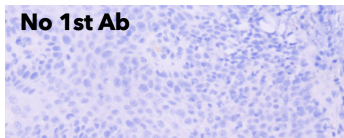
IHC of mouse liver using anti-Rab25 antibody and FFPE tissue after heat-induced antigen retrieval; Anti-Rab25 Ab at 1:750/DAB detection;



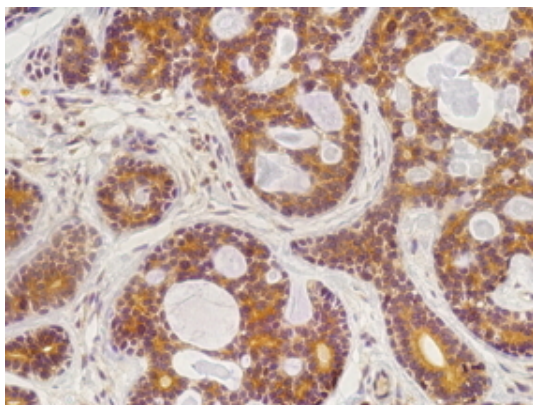
IHC of rat brain using anti-Rab25 antibody and FFPE tissue after heat-induced antigen retrieval; Anti-Rab25 Ab at 1:750/DAB detection;



IHC of human breast cancer using anti-Rab25 antibody and FFPE tissue after heat-induced antigen retrieval; Anti-Rab25 Ab at 1:750/DAB detection;



IHC of human tonsil using anti-Rab25 antibody and FFPE tissue after heat-induced antigen retrieval; Anti-Rab25 Ab at 1:750/DAB detection;



Anti-Rab25 antibody IHC staining of mammary tissue; Immunohistochemistry of formalin-fixed, paraffin-embedded tissue after heat-induced antigen retrieval; antibody concentration 1/200;

For research use only, not for diagnostic use

SICGEN's Proprietary Immunogen Policy

In order to produce high specific antibodies SICGEN has invested a lot of time and effort into selecting immunogen sequences. SICGEN has decided to protect this information by not publishing it on the website. However, these sequences are available on request.