

**Catalogue No.**

AB0032-100

**Qty:**

200 µg

## Anti-Rab3a

**Source:** Goat

**General description:** Goat polyclonal antibody to Rab3a. Rab3a belongs to the small GTPase superfamily, Rab family. Rab3a is involved in exocytosis by regulating a late step in synaptic vesicle fusion. It plays a role in neurotransmitter release by regulating membrane flow in the nerve terminal.

**Alternative names:** RAB3A, RAS-associated protein RAB3A, ras-related protein Rab-3A antibody.

**Form:** Polyclonal antibody supplied as a 100 µl (2 mg/ml) aliquot in PBS, 20% glycerol and 0.05% sodium azide. This antibody is epitope-affinity purified from goat antiserum.

**Immunogen:** Recombinant peptide derived from within residues 181 aa to the C-terminus of Rab3a produced in E. coli.

**Specificity:** Detects endogenous levels of Rab3a by Western blot. It does not cross-react with Rab3b, Rab3c and Rab3c.

**Reactivity:** Reacts with Human, Rat, Mouse, Monkey and Canine proteins

Sample	WB	IHC (F)	IHC (P)	IF	ELISA
Human	+++	+++	+++	ND	ND
Rat	+++	+++	+++	ND	ND
Mouse	+++	+++	+++	ND	ND
Canine	+++	+++	+++	ND	ND
Monkey	+++	+++	+++	ND	ND

+++ excellent, ++ good, + poor, ND not determined

**Usage:**

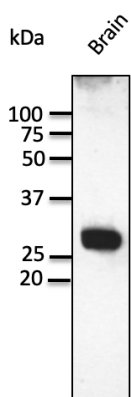
WB: 1:1,000-1:2,000  
IHC (F): 1:250-1:1,000  
IHC (P): 1:250-1:1,000

**Storage:** For continuous use, store at 2-8 C for one-two days. For extended storage, store in -20 C freezer. Working dilution samples should be discarded if not used within 12 hours.

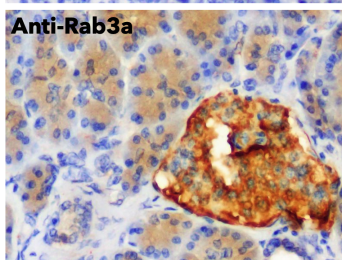
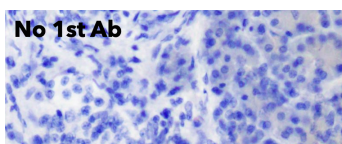
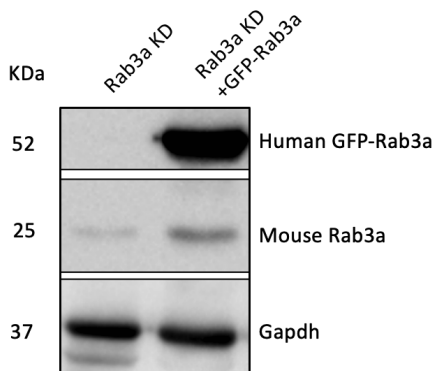
**Special instructions:** The antibody solution should be gently mixed before use..

### References:

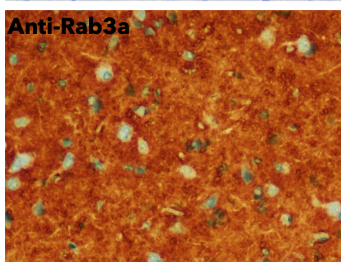
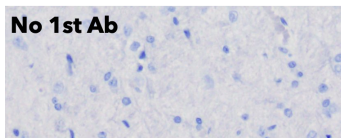
1. Cabaço LC, Bento-Lopes L, Neto MV, et al. JID Innov 2022 Jun PMID: 36090299



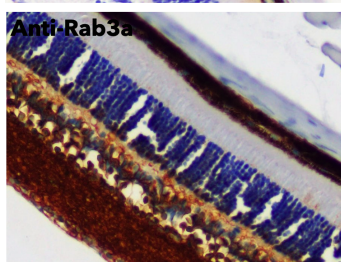
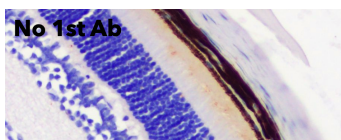
Anti-Rab3a Ab at 1/1,000 dilution; lysates at 50 µg per lane; rabbit polyclonal to goat IgG (HRP) at 1/10,000 dilution;



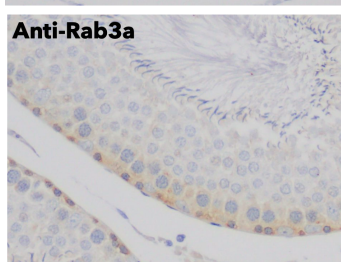
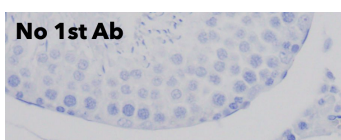
IHC of human pancreas using anti-Rab3a antibody and FFPE tissue after heat-induced antigen retrieval. Anti-Rab3a Ab at 1:750/DAB detection;



IHC of mouse brain using anti-Rab3a antibody and FFPE tissue after heat-induced antigen retrieval. Anti-Rab3a Ab at 1:750/DAB detection;



IHC of mouse retina using anti-Rab3a antibody and FFPE tissue after heat-induced antigen retrieval. Anti-Rab3a Ab at 1:750/DAB detection;



IHC of mouse testis using anti-Rab3a antibody and FFPE tissue after heat-induced antigen retrieval. Anti-Rab3a Ab at 1:750/DAB detection;

For research use only, not for diagnostic use

#### SICGEN's Proprietary Immunogen Policy

In order to produce high specific antibodies SICGEN has invested a lot of time and effort into selecting immunogen sequences. SICGEN has decided to protect this information by not publishing it on the website. However, these sequences are available on request.