

**Catalogue No.**

AB0024-200

**Qty:**

600 µg

## Anti-Rab5c

**Source:** Goat

**General description:** Goat polyclonal antibody to Rab5c. Rab5c belongs to the small GTPase superfamily, Rab family. Rab5c is an Early Endosome Marker and functions as a key regulator of vesicular trafficking during early endocytosis.

**Alternative names:** L1880, RAB5C, RAS-associated protein RAB5C, ras-related protein Rab-5C, Rab5L antibody.

**Form:** Polyclonal antibody supplied as a 200 µl (3 mg/ml) aliquot in PBS, 20% glycerol and 0.05% sodium azide. This antibody is epitope-affinity purified from goat antiserum.

**Immunogen:** Purified recombinant peptide derived from within residues 118 aa to the C-terminus of mouse Rab5c produced in E. coli.

**Specificity:** Detects Rab5c by Western blot in the following human, rat and mouse whole cell lysates and transfected cells with GFP-Rab5c. This antibody is specific for Rab5c. It does not recognize Rab5a and Rab5b proteins.

**Reactivity:** Reacts with Human, Rat, Mouse, Monkey and Canine proteins

Sample	WB	IHC (F)	IHC (P)	IF	ELISA
Human	+++	+++	+++	ND	ND
Rat	+++	+++	+++	ND	ND
Mouse	+++	+++	+++	ND	ND
Canine	+++	+++	+++	ND	ND
Monkey	+++	+++	+++	ND	ND

+++ excellent, ++ good, + poor, ND not determined

**Usage:**

WB: 1:250-1:2,000

IHC (F): 1:200-1:750

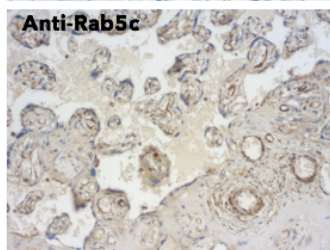
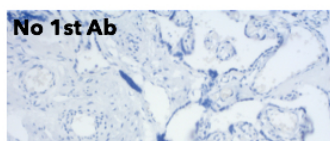
IHC (P): 1:200-1:750

**Storage:** Store at -20 C for long-term storage. Store at 2-8 C for up to one month.

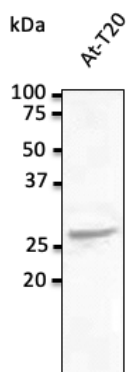
**Special instructions:** The antibody solution should be gently mixed before use. Avoid freeze/thaw cycles..

### References:

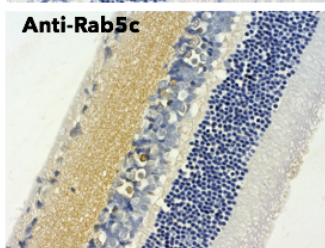
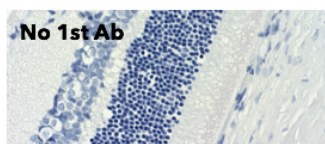
1. Cardoso MHS, PhD Thesis, NOVA University of Lisbon, Portugal 2018



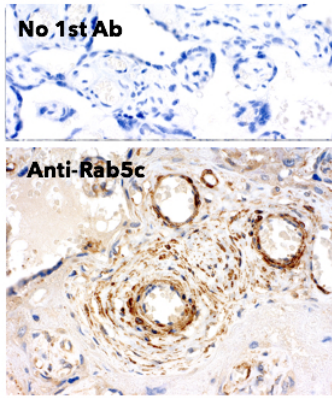
IHC of human placenta using anti-Rab5c antibody and FFPE tissue after heat-induced antigen retrieval. Anti-Rab5c Ab at 1:500/DAB detection;



Anti-Rab5c Ab at 1/500 dilution; lysates at 100  $\mu$ g per lane; rabbit polyclonal to goat IgG (HRP) at 1/10,000 dilution;



IHC of rat eye using anti-Rab5c antibody and FFPE tissue after heat-induced antigen retrieval. Anti-Rab5c Ab at 1:500/DAB detection;



IHC of human placenta using anti-Rab5c antibody and FFPE tissue after heat-induced antigenretrieval. Anti-Rab5c Ab at 1:500/DAB detection;

For research use only, not for diagnostic use

**SICGEN's Proprietary Immunogen Policy**

In order to produce high specific antibodies SICGEN has invested a lot of time and effort into selecting immunogen sequences. SICGEN has decided to protect this information by not publishing it on the website. However, these sequences are available on request.