

**Catalogue No.**

AB0022-200

**Qty:**

400 µg

## Anti-Rab20

**Source:** Goat

**General description:** Goat polyclonal antibody to RAB20. RAB20 belongs to the large RAB family of low molecular weight GTPases that are involved in intracellular membrane trafficking. This protein localizes to Golgi apparatus and plays a role in apical endocytosis/recycling.

**Alternative names:** Ras-related protein Rab-20 antibody.

**Form:** Polyclonal antibody supplied as a 200 µl (2 mg/ml) aliquot in PBS, 20% glycerol and 0.05% sodium azide. This antibody is epitope-affinity purified from goat antiserum.

**Immunogen:** Purified recombinant peptide derived from within residues 130 aa to the C-terminus of Rab20 produced in E. coli.

**Specificity:** Detects Rab20 in transfected cells with GFP-Rab20 by Western blot. Detects levels of endogenous Rab20 (testis, liver and kidney) by Western blot.

**Reactivity:** Reacts with Human, Rat, Mouse, Monkey and Canine proteins

Sample	WB	IHC (F)	IHC (P)	IF	ELISA
Human	+++	ND	ND	ND	ND
Rat	+++	ND	ND	ND	ND
Mouse	+++	ND	ND	ND	ND
Canine	+++	ND	ND	ND	ND
Monkey	+++	ND	ND	ND	ND

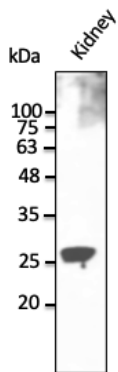
+++ excellent, ++ good, + poor, ND not determined

**Usage:**

WB: 1:250-1:2,000

**Storage:** Store at -20 C for long-term storage. Store at 2-8 C for up to one month.

**Special instructions:** The antibody solution should be gently mixed before use. Avoid freeze/thaw cycles..



Anti-Rab20 Ab at 1/1,000 dilution; lysates at 50  $\mu$ g per lane; rabbit polyclonal to goat IgG (HRP) at 1/10,000 dilution;

For research use only, not for diagnostic use

**SICGEN's Proprietary Immunogen Policy**

In order to produce high specific antibodies SICGEN has invested a lot of time and effort into selecting immunogen sequences. SICGEN has decided to protect this information by not publishing it on the website. However, these sequences are available on request.