

Catalogue No.

AB0017-100

Qty:

300 µg

Anti-Rab1b

Source: Goat

General description: Goat polyclonal antibody to Rab1b. Rab1b belongs to the small GTPase superfamily, Rab family. Rab1b together with Rab1a control vesicle traffic from the endoplasmic reticulum to the Golgi apparatus.

Alternative names: RAB1A, RAB1B, RAS-associated protein RAB1A, ras-related protein Rab-1B, ras-related protein Rab-1A, ras-related protein Rab-1B, YPT1 antibody.

Form: Polyclonal antibody supplied as a 100 µl (3 mg/ml) aliquot in PBS, 20% glycerol and 0.05% sodium azide. This antibody is epitope-affinity purified from goat antiserum.

Immunogen: Purified recombinant peptide derived from within residues 110 aa to the C-terminus of Rab1b produced in E. coli.

Specificity: Detects endogenous levels of Rab1b protein by Western blot in whole cell lysates and transfected cells with GFP-Rab1b cds.

Reactivity: Reacts with Human, Rat, Mouse, Monkey and Canine proteins

Sample	WB	IHC (F)	IHC (P)	IF	ELISA
Human	+++	+++	+++	ND	ND
Rat	+++	+++	+++	ND	ND
Mouse	+++	+++	+++	ND	ND
Canine	+++	+++	+++	ND	ND
Monkey	+++	+++	+++	ND	ND

+++ excellent, ++ good, + poor, ND not determined

Usage:

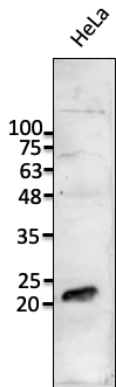
WB: 1:500-1:5,000

IHC (F): 1:100-1:500

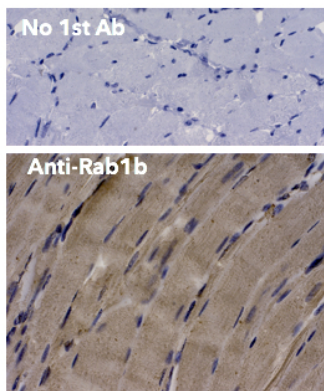
IHC (P): 1:100-1:500

Storage: Store at -20 C for long-term storage. Store at 2-8 C for up to one month.

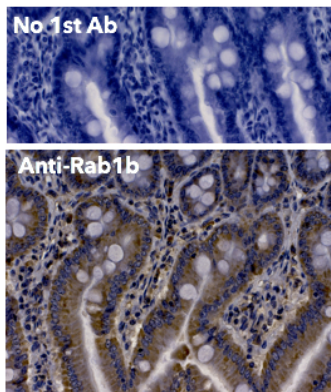
Special instructions: The antibody solution should be gently mixed before use. Avoid freeze/thaw cycles..



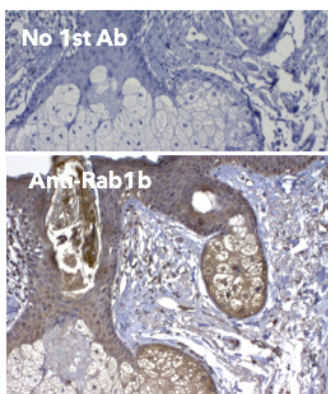
Anti-Rab1b Ab at 1/1,000 dilution; lysates at 50 µg per lane; rabbit polyclonal to goat IgG (HRP) at 1/10,000 dilution;



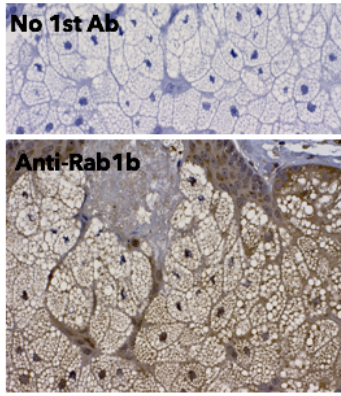
IHC of human muscle using anti-Rab1b antibody and FFPE tissue after heat-induced antigen retrieval. Anti-Rab1b Ab at 1:250/DAB detection.



IHC of mouse intestine using anti Rab1b antibody and FFPE tissue after heat-induced antigen retrieval. Anti-Rab1b Ab at 1:250/DAB detection.



IHC of human skin using anti-Rab1b antibody and FFPE tissue after heat-induced antigen retrieval. Anti-Rab1b Ab at 1:250/DAB detection.



IHC of human skin using anti-Rab1b antibody and FFPE tissue after heat-induced antigen retrieval. Anti-Rab1b Ab at 1:250/DAB detection.

For research use only, not for diagnostic use

SICGEN's Proprietary Immunogen Policy

In order to produce high specific antibodies SICGEN has invested a lot of time and effort into selecting immunogen sequences. SICGEN has decided to protect this information by not publishing it on the website. However, these sequences are available on request.