

Catalogue No.

AB0016-200
AB0016-500

Qty:

800 µg
2 mg

Anti-CX43

Source: Goat

General description: Goat polyclonal to connexin 43, which is a member of the connexin family. Cx43 is a component of gap junctions, which are composed of arrays of intercellular channels that provide a route for the diffusion of low molecular weight materials from cell to cell. This protein is the major protein of gap junctions in embryonic development and in the heart that are thought to have a crucial role in the synchronized contraction of the heart.

Alternative names: AVSD3, CX43, DFNB38, gap junction protein, alpha 1, 43kDa, GJA1, GJAL HSS, HLHS1, ODDD antibody.

Form: Polyclonal antibody supplied as a 200 or 500 µl (4 mg/ml) aliquot in PBS, 20% glycerol and 0.05% sodium azide.

Immunogen: Purified recombinant peptide derived from within residues 230 aa to the C-terminus of rat CX43 produced in E. coli.

Specificity: Detects endogenous levels of total connexin 43.

Reactivity: Reacts with Human, Rat, Mouse, Monkey and Canine proteins

Sample	WB	IHC (F)	IHC (P)	IF	ELISA
Human	+++	+++	+++	+++	ND
Rat	+++	+++	+++	+++	ND
Mouse	+++	+++	+++	+++	ND
Canine	+++	+++	+++	+++	ND
Monkey	+++	+++	+++	+++	ND

+++ excellent, ++ good, + poor, ND not determined

Usage:

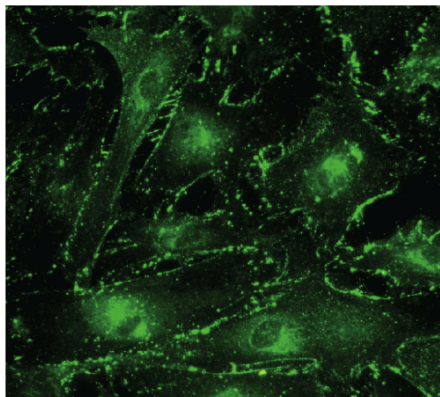
WB: 1:500-1:2,000
IF: 1:50-1:250
IHC (P): 1:250-1:800
IHC (F): 1:250-1:800

Storage: Store at -20 C for long-term storage. Store at 2-8 C for up to one month.

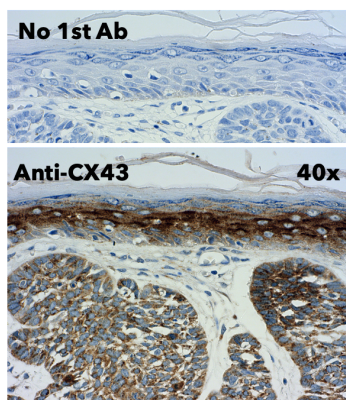
Special instructions: The antibody solution should be gently mixed before use. Avoid freeze/thaw cycles..

References:

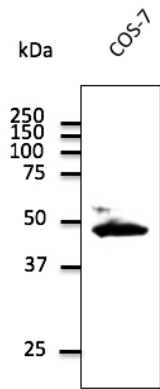
1. Martins-Marques T, Costa MC, Catarino S, et al. EMBO Rep 2022 May PMID: 35593040
2. Lissoni A, Hulpiau P, Martins-Marques T, et al. Cardiovasc Res. 2021 Jan PMID: 31841141
3. Catarino S, Ribeiro-Rodrigues TM, Sa Ferreira R, et al. Cells 2020 Apr. PMID: 32272685
4. Wang W, Ye S, Zhang L, et al. BMC Cardiovasc Disord 2020 PMID: 32066388
5. Barbeitos JP, MSc Thesis, University of Coimbra, Portugal 2018
6. Martins-Marques T, Pinho MJ, Zuzarte M. et al. J Extracell Vesicles. 2016 Sep PMID: 27702427
7. Paiva RA, MSc Thesis, University of Coimbra, Portugal, 2015
8. Ferreira RRS, MSc Thesis, University of Coimbra, Portugal, 2015
9. Martins-Marques T, Anjo SI, Pereira P, et al. Mol Cell Proteomics 2015 Aug PMID: 26316108
10. Ribeiro-Rodrigues TM, Catarino S, Marques C, et al. FASEB J 2014 Nov PMID: 25070368



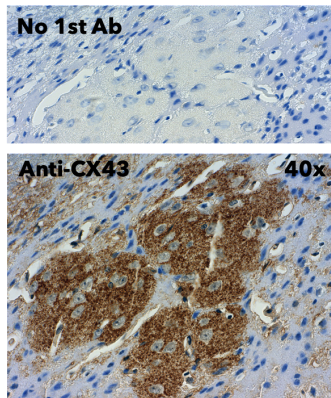
Immunostaining of primary RPE cells with CX43 Ab at 1/100 dilution;



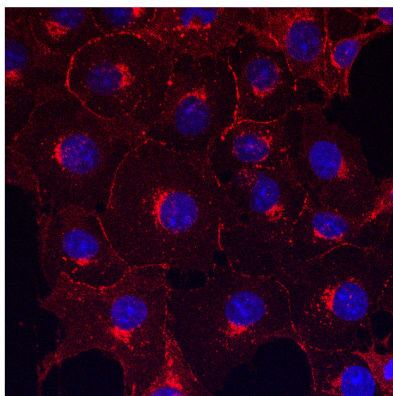
IHC of human skin using CX43 antibody and FFPE tissue after heat-induced antigen retrieval. Anti-CX43 Ab at 1:500/DAB detection;



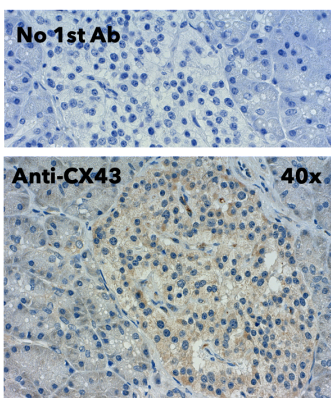
Endogenous CX43 detected at 1/1,000 dilution; lysate at 100 µg per lane and rabbit polyclonal to goat IgG (HRP) at 1/10,000 dilution;



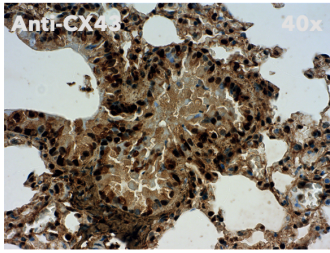
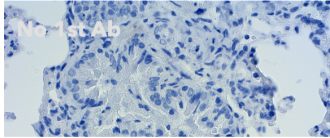
IHC of mouse brain using anti-CX43 antibody and FFPE tissue after heat-induced antigen retrieval. Anti-CX43 Ab at 1:500/DAB detection;



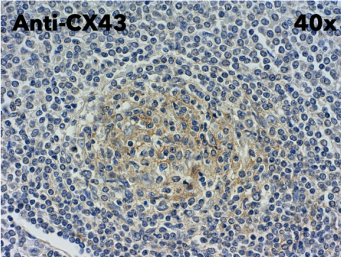
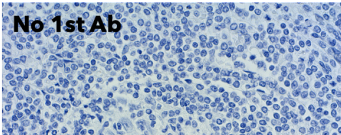
Immunostaining of COS7 cells with CX43 Ab at 1/250 dilution and Dylight 550;



IHC of mouse pancreas using anti CX43 antibody and FFPE tissue after heat-induced antigen retrieval. Anti-CX43 Ab at 1:500/DAB detection;



IHC of mouse lung using anti-CX43 antibody and FFPE tissue after heat-induced antigen retrieval. Anti-CX43 Ab at 1:500/DAB detection;



IHC of mouse spleen using CX43 antibody and FFPE tissue after heat-induced antigen retrieval. Anti-CX43 Ab at 1:500/DAB detection;

For research use only, not for diagnostic use

SICGEN's Proprietary Immunogen Policy

In order to produce high specific antibodies SICGEN has invested a lot of time and effort into selecting immunogen sequences. SICGEN has decided to protect this information by not publishing it on the website. However, these sequences are available on request.