

Catalogue No.

AB0015-200

Qty:

800 µg

Anti-CX43

Source: Goat

General description: Goat polyclonal to connexin 43, which is a member of the connexin family. Cx43 is a component of gap junctions, which are composed of arrays of intercellular channels that provide a route for the diffusion of low molecular weight materials from cell to cell. This protein is the major protein of gap junctions in embryonic development and in the heart that are thought to have a crucial role in the synchronized contraction of the heart.

Alternative names: AVSD3, CX43, DFNB38, gap junction protein, alpha 1, 43kDa, GJA1, GJAL HSS, HLHS1, ODDD antibody.

Form: Polyclonal antibody supplied as a 200 µl (4 mg/ml) aliquot in PBS, 20% glycerol and 0.05% sodium azide. This antibody is epitope-affinity purified from goat antiserum.

Immunogen: Purified recombinant peptide derived from within residues 230 aa to the C-terminus of rat CX43 produced in E. coli.

Specificity: Detects endogenous levels of total connexin 43.

Reactivity: Reacts with Human, Rat, Mouse, Monkey and Canine proteins

Sample	WB	IHC (F)	IHC (P)	IF	ELISA
Human	+++	+++	+++	+++	ND
Rat	+++	+++	+++	+++	ND
Mouse	+++	+++	+++	+++	ND
Canine	+++	+++	+++	+++	ND
Monkey	+++	+++	+++	+++	ND

+++ excellent, ++ good, + poor, ND not determined

Usage:

WB: 1:500-1:2,000

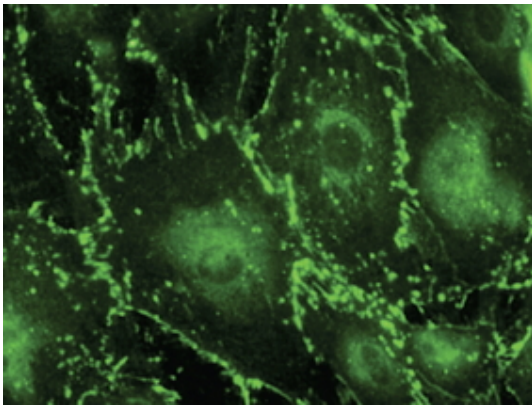
IF: 1:50-1:250
IHC (P): 1:250-1:800
IHC (F): 1:250-1:800

Storage: For continuous use, store at 2-8 C for one-two days. For extended storage, store in -20 C freezer. Working dilution samples should be discarded if not used within 12 hours.

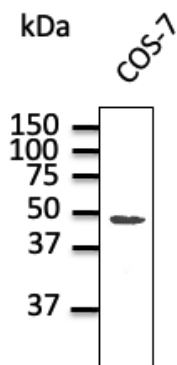
Special instructions: The antibody solution should be gently mixed before use..

References:

1. Xing J, Wang H, Chen L, et al. Int Immunopharmacol 2022 PMID: 36442284
2. Yu X, He W, Xie J, et al. J Cardiovasc Electrophysiol. 2018 Dec PMID: 30516302



Immunostaining of primary RPE cells with CX43 Ab at 1/100 dilution;



Endogenous Cx43 detected at 1/1,000 dilution; lysate at 100 µg per lane and rabbit polyclonal to goat IgG (HRP) at 1/10,000 dilution;

For research use only, not for diagnostic use

SICGEN's Proprietary Immunogen Policy

In order to produce high specific antibodies SICGEN has invested a lot of time and effort into selecting immunogen sequences. SICGEN has decided to protect this information by not publishing it on the website. However, these sequences are available on request.