

Catalogue No.

AB0008-100

Qty:

300 µg

Anti-Rab1a

Source: Goat

General description: Goat polyclonal antibody to Rab1a. This protein is a member of the Ras superfamily of GTPases. Members of this family cycle between inactive GDP-bound and active GTP-bound forms. This small GTPase controls vesicle traffic from the endoplasmic reticulum to the Golgi apparatus.

Alternative names: Rab1, YPT1 antibody.

Form: Polyclonal antibody supplied as a 100 µl (3 mg/ml) aliquot in PBS, 20% glycerol and 0.05% sodium azide. This antibody is epitope-affinity purified from goat antiserum.

Immunogen: Purified recombinant peptide derived from within residues 107 aa to the C-terminus of Rab1a produced in E. coli.

Specificity: Detects endogenous levels of Rab1a (HUH, LS174T, MDA-MB-435, MCF7, Cos7, MCR, AtT20, IMCD3, HeLa, MDCK) by Western blot. This antibody does not cross-react with Rab1b.

Reactivity: Reacts with Human, Rat, Mouse, Monkey and Canine proteins

Sample	WB	IHC (F)	IHC (P)	IF	ELISA
Human	+++	+++	+++	ND	ND
Rat	+++	+++	+++	ND	ND
Mouse	+++	+++	+++	ND	ND
Canine	+++	+++	+++	ND	ND
Monkey	+++	+++	+++	ND	ND

+++ excellent, ++ good, + poor, ND not determined

Usage:

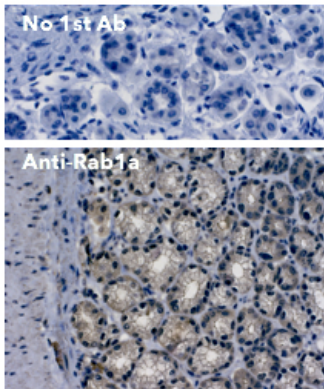
WB: 1:1,000-1:2,000

IHC (F): 1:100-1:500

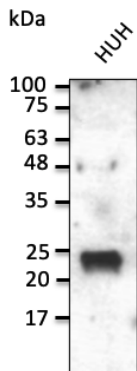
IHC (P): 1:100-1:500

Storage: For continuous use, store at 2-8 C for one-two days. For extended storage, store in -20 C freezer. Working dilution samples should be discarded if not used within 12 hours.

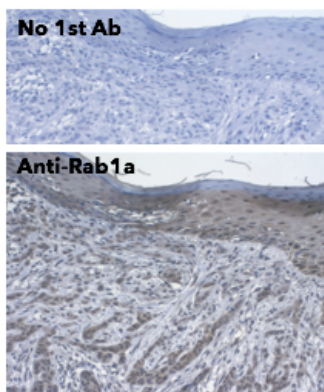
Special instructions: The antibody solution should be gently mixed before use..



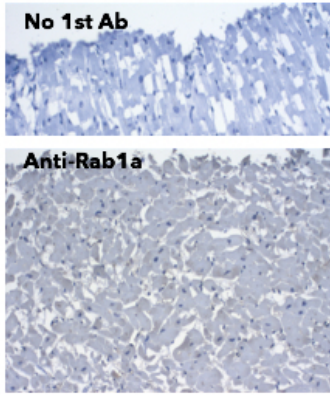
IHC of mouse stomach using anti-Rab1a antibody and FFPE tissue after heat-induced antigen retrieval. Anti-Rab1a Ab at 1:250/DAB detection;



Anti-Rab1a Ab at 1/1,000 dilution; lysates at 50 µg per lane; rabbit polyclonal to goat IgG (HRP) at 1/10,000 dilution;



IHC of human skin using anti-Rab1a antibody and FFPE tissue after heat-induced antigen retrieval. Anti-Rab1a Ab at 1:250/DAB detection;



IHC of human myocardium using anti-Rab1a antibody and FFPE tissue after heat-induced antigen retrieval. Anti-Rab1a Ab at 1:250/DAB detection;

For research use only, not for diagnostic use

SICGEN's Proprietary Immunogen Policy

In order to produce high specific antibodies SICGEN has invested a lot of time and effort into selecting immunogen sequences. SICGEN has decided to protect this information by not publishing it on the website. However, these sequences are available on request.