

Catalogue No.

AB1340-200

Qty:

400 µg

Anti-mCherry

Source: Goat

General description: Goat polyclonal antibody to mCherry (Cherry fluorescent protein). mCherry protein is derived from DsRed, an engineered red fluorescent protein from so-called disc corals of the genus *Discosoma*. mCherry is a ~27 kDa protein that is optimally excited at a 587 nm and has a maximum of emission at 610 nm. It is a basic (constitutively fluorescent) red fluorescent protein and It is reported to be a very rapidly-maturing monomer with low acid sensitivity.

Alternative names: Cherry fluorescent protein, dsRed, red fluorescent protein, tdTomato antibody

Form: Polyclonal antibody supplied as a 200 µl (2 mg/ml) aliquot in NaHCO₃ 100 mM pH 9. This antibody is epitope-affinity purified from goat antiserum and does not contain preservatives.

Immunogen: Purified recombinant peptide produced in *E. coli*.

Specificity: In 293HEK cells transfected with cds plasmid detects a band of 27 kDa by Western blot. This antibody recognizes very well tdTomato and does not cross-react to GFP (green fluorescent protein).

Reactivity: Reacts with Transfected cells proteins

Sample	WB	IHC (F)	IHC (P)	IF	ELISA	IEM
Transfected cells	+++	+++	+++	+++	ND	+++

+++ excellent, ++ good, + poor, ND not determined

Usage:

WB: 1:500-1:5,000

IHC (F): 1:50-1:500

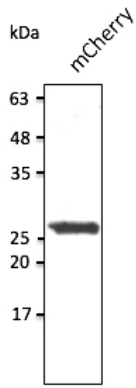
IHC (P): 1:50-1:500

IF: 1:50-1:500

IEM: 1:50-1:500

Storage: Store at -20 C for long-term storage.

Special instructions: Avoid freeze/thaw cycles..



Anti-mCherry Ab at 1/2,500 dilution; 293HEK cells transduced with mCherry Ad; lysates at 50 μ g per lane; rabbit polyclonal to goat IgG (HRP) at 1/10,000 dilution;

For research use only, not for diagnostic use

SICGEN's Proprietary Immunogen Policy

In order to produce high specific antibodies SICGEN has invested a lot of time and effort into selecting immunogen sequences. SICGEN has decided to protect this information by not publishing it on the website. However, these sequences are available on request.