

**Catalogue No.**

AB0337-100

**Qty:**

300 µg

## Anti-gapA

**Source:** Goat

**General description:** Goat polyclonal antibody to gapA from *Microbacterium* sp.

**Alternative names:** type I glyceraldehyde 3-phosphate dehydrogenase, GAPDH antibody

**Form:** Polyclonal antibody supplied as a 100 µl (3 mg/ml) aliquot in PBS, 20% glycerol and 0.05% sodium azide. This antibody is epitope-affinity purified from goat antiserum.

**Immunogen:** Recombinant peptide (176 aa – stop) derived from *Microbacterium* sp produced in *E. coli*.

**Specificity:** Detects endogenous levels of gapA by Western blot.

**Reactivity:** Reacts with *Microbacterium* proteins

Sample	WB	IHC (F)	IHC (P)	IF	ELISA
Microbacterium	+++	ND	ND	ND	ND

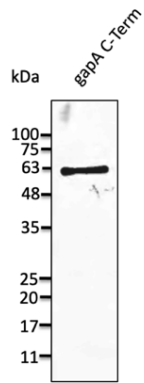
+++ excellent, ++ good, + poor, ND not determined

**Usage:**

WB: 1:500-1:2,000

**Storage:** Store at -20 C for long-term storage. Store at 2-8 C for up to one month.

**Special instructions:** Avoid freeze/thaw cycles..



Anti-gapA Ab at 1/1,000 dilution; lane with 30 ng of recombinant fusion protein (176 aa – stop) from *Microbacterium* sp; rabbit polyclonal to goat IgG (HRP) at 1/10,000 dilution;

For research use only, not for diagnostic use

**SICGEN's Proprietary Immunogen Policy**

In order to produce high specific antibodies SICGEN has invested a lot of time and effort into selecting immunogen sequences. SICGEN has decided to protect this information by not publishing it on the website. However, these sequences are available on request.