

**Catalogue No.**

AB0415-100

**Qty:**

300 µg

## Anti-gapA

**Source:** Goat**General description:** Goat polyclonal antibody to gapA from *Pseudomonas aeruginosa*.**Alternative names:** glyceraldehyde 3-phosphate dehydrogenase, GAPDH antibody.**Form:** Polyclonal antibody supplied as a 100 µl (3 mg/ml) aliquot in PBS, 20% glycerol and 0.05% sodium azide.**Immunogen:** Recombinant peptide (223 aa – stop) derived from *Pseudomonas aeruginosa* produced in *E. coli*.**Specificity:** Detects endogenous levels of gapA by Western blot.**Reactivity:** Reacts with *Pseudomonas* proteins

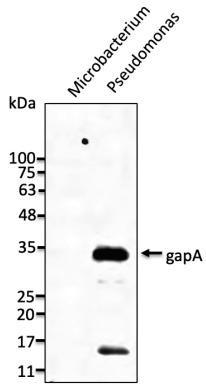
Sample	WB	IHC (F)	IHC (P)	IF	ELISA
<i>Pseudomonas</i>	+++	ND	ND	ND	ND

+++ excellent, ++ good, + poor, ND not determined

**Usage:**

WB: 1:500-1:2,000

**Storage:** Store at -20 C for long-term storage. Store at 2-8 C for up to one month.**Special instructions:** Avoid freeze/thaw cycles..



Anti-gapA Ab at 1/1,000 dilution; lanes with 30 ng of recombinant fusion protein (C-term); rabbit polyclonal to goat IgG (HRP) at 1/10,000 dilution;

For research use only, not for diagnostic use

#### SICGEN's Proprietary Immunogen Policy

In order to produce high specific antibodies SICGEN has invested a lot of time and effort into selecting immunogen sequences. SICGEN has decided to protect this information by not publishing it on the website. However, these sequences are available on request.