

Catalogue No.

AB081633-100

Qty:

250 µg

Anti-RFP, DyLight®633

Source: Goat

General description: Goat polyclonal antibody to RFP (Red fluorescent protein) conjugated to DyLight® 633. RFP is derived from DsRed, an engineered red fluorescent protein from so-called disc corals of the genus *Discosoma*.

Alternative names: Cherry fluorescent protein; dsRed, red fluorescent protein, tdTomato antibody.

Form: Polyclonal antibody supplied as a 100 µl (2.5 mg/ml) aliquot in PBS, 20% glycerol and 0.05% sodium azide.

Immunogen: Purified recombinant RFP peptide produced in *E. coli*.

Specificity: In 293HEK cells transfected with cds plasmid detects a band of 29 kDa by Western blot. This antibody also recognizes very well tdTomato and does not cross-react to GFP (green fluorescent protein).

Reactivity: Reacts with Transfected cells proteins

Sample	WB	IHC (F)	IHC (P)	IF	ELISA	IEM
Transfected cells	+++	++	ND	+++	ND	ND

+++ excellent, ++ good, + poor, ND not determined

Usage:

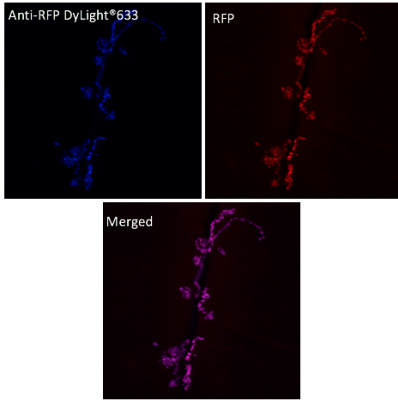
WB: 1:500-1:5,000

IHC (F): 1:50-1:1,000

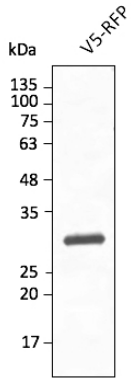
IF: 1:50-1:500

Storage: Store at -20 C for long-term storage. Store at 2-8 C for up to one month.

Special instructions: Avoid freeze/thaw cycles..



Immunofluorescence in *Drosophila* larvae NMJ expressing RFP in neurons (DyglutRFP), muscle6/7 using anti-RFP conjugated to DyLight®633 at 1/500;



Anti-RFP Ab conjugated to DyLight® 633 at 1/2,500 dilution using HEK293 transfected cell lysates at 50 µg per lane;

For research use only, not for diagnostic use

SICGEN's Proprietary Immunogen Policy

In order to produce high specific antibodies SICGEN has invested a lot of time and effort into selecting immunogen sequences. SICGEN has decided to protect this information by not publishing it on the website. However, these sequences are available on request.