

**Catalogue No.**

AB200633-100

**Qty:**

500 µg

## Anti-Goat IgG, DyLight®633

**Source:** Chicken

**General description:** Chicken polyclonal antibody to goat IgG conjugated to DyLight®633.

**Alternative names:** Immunoglobulin Y antibody.

**Form:** Polyclonal antibody supplied as a 200 µl (2.5 mg/ml) aliquot in PBS, 20% glycerol, 0.05% ProClin® and 0.05% sodium azide.

**Immunogen:** Full goat IgG affinity purified from domestic goat (*Capra hircus*) serum using protein G. Purity >95% by SDS-PAGE.

**Specificity:** Using serum samples detects goat IgG by Western blot. Reduced cross-reactivity to other species.

**Reactivity:** Reacts with Goat proteins

Sample	WB	IHC (F)	IHC (P)	IF	ELISA	IEM
Goat	+++	ND	ND	+++	ND	ND

+++ excellent, ++ good, + poor, ND not determined

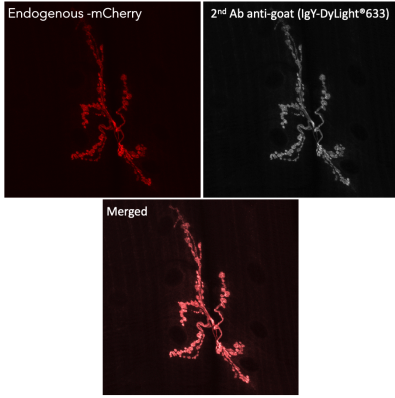
**Usage:**

WB: 1:2,000-1:10,000

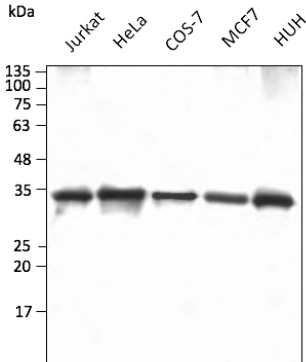
IF: 1:100-1:1,000

**Storage:** Store at -20 C for long-term storage. Store at 2-8 C for up to one month.

**Special instructions:** Avoid freeze/thaw cycles..



Immunofluorescence in *Drosophila* larvae NMJ muscle 6/7 expressing mCherry in neurons (DyGlutmCherry) using 1st Ab anti-mCherry at 1/1,000 and 2nd Ab anti-goat IgY conjugated to DyLight®633 at 1/500;



Anti-GAPDH Ab at 1/2,500 dilution using HEK293 transfected cell lysates at 50 µg per lane; chicken polyclonal to goat IgG conjugated to DyLight® 633 (AB200633) at 1/10,000 dilution;

For research use only, not for diagnostic use

**SICGEN's Proprietary Immunogen Policy**

In order to produce high specific antibodies SICGEN has invested a lot of time and effort into selecting immunogen sequences. SICGEN has decided to protect this information by not publishing it on the website. However, these sequences are available on request.