

Catalogue No.

AB0435-100

Qty:

300 µg

Anti-CCBE1

Source: Goat

General description: Goat polyclonal antibody to CCBE1. CCBE1 is thought to function in extracellular matrix remodeling and migration. It is required for lymphangioblast budding and angiogenic sprouting from venous endothelium during embryogenesis.

Alternative names: collagen and calcium binding EGF domains 1, HKLLS1 antibody.

Form: Polyclonal antibody supplied as a 100 µl (3 mg/ml) aliquot in PBS, 20% glycerol and 0.05% sodium azide. This antibody is epitope-affinity purified from goat antiserum.

Immunogen: Purified recombinant peptide derived from within residues 389 aa to the C-terminus of human CCBE1 produced in E. coli.

Specificity: Detects endogenous levels of CCBE1 by Western blot in the whole cell lysates (HeLa, LS174T, U118, Jurkat, etc.).

Reactivity: Reacts with Human proteins

Sample	WB	IHC (F)	IHC (P)	IF	ELISA	IEM
Human	+++	ND	ND	ND	ND	ND

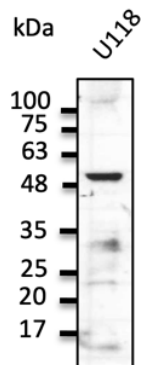
+++ excellent, ++ good, + poor, ND not determined

Usage:

WB: 1:1,000-1:5,000

Storage: Store at -20 C for long-term storage. Store at 2-8 C for up to one month.

Special instructions: Avoid freeze/thaw cycles..



Endogenous CCBE1 detected with at 1:2,500 dilution; lysate at 50 μ g per lane and rabbit polyclonal to goat IgG (HRP) at 1/10,000 dilution;

For research use only, not for diagnostic use

SICGEN's Proprietary Immunogen Policy

In order to produce high specific antibodies SICGEN has invested a lot of time and effort into selecting immunogen sequences. SICGEN has decided to protect this information by not publishing it on the website. However, these sequences are available on request.