

**Catalogue No.**

AB66680-100

**Qty:**

250 µg

## Anti-GFP, DyLight®680

**Source:** Goat

**General description:** Goat polyclonal antibody to GFP (green fluorescent protein) conjugated to DyLight® 680. GFP is a protein composed of 238 amino acid residues (26.9 kDa) that exhibits bright green fluorescence when exposed to blue light. In cell and molecular biology, the GFP protein is frequently used as a reporter of expression.

**Alternative names:** Purified recombinant peptide produced in E. coli.

**Form:** Polyclonal antibody supplied as a 100 (2.5 mg/ml) aliquot in PBS, 20% glycerol and 0.05% sodium azide.

**Immunogen:** Purified recombinant peptide produced in E. coli.

**Specificity:** In 293HEK cells transfected with cds plasmid detects a band of 27 kDa by Western blot. This antibody does not recognize mCherry fluorescent protein.

**Reactivity:** Reacts with Transfected cells proteins

Sample	WB	IHC (F)	IHC (P)	IF	ELISA	IEM
Transfected cells	+++	+++	ND	+++	ND	ND

+++ excellent, ++ good, + poor, ND not determined

**Usage:**

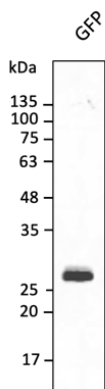
WB: 1:500-1:5,000

IHC (F): 1:50-1:1,000

IF: 1:50-1:1,000

**Storage:** Store at -20 C for long-term storage. Store at 2-8 C for up to one month.

**Special instructions:** Avoid freeze/thaw cycles..



Anti-GFP Ab conjugated to DyLight® 680 at  
1/2,000 dilution using HEK293 transfected cell  
lysates at 30 µg per lane;

For research use only, not for diagnostic use

#### **SICGEN's Proprietary Immunogen Policy**

In order to produce high specific antibodies SICGEN has invested a lot of time and effort into selecting immunogen sequences. SICGEN has decided to protect this information by not publishing it on the website. However, these sequences are available on request.