

Catalogue No.

AB0101-100

Qty:

300 µg

Anti-HIS Epitope

Source: Goat

General description: Goat polyclonal antibody to HIS epitope. The HHHHHH epitope is used as a tag on many recombinant proteins to facilitate purification. The antibody recognizes the His-tag fused to the amino- or carboxy- termini of targeted proteins in transformed or transfected cells.

Alternative names: 6xHis-Tag®, HIS6 Tag, His Tag, HHHHHH Tag antibody.

Form: Polyclonal antibody supplied as a 100 µl (3 mg/ml) aliquot in PBS, 20% glycerol and 0.05% sodium azide. This antibody is epitope-affinity purified from goat antiserum.

Immunogen: Purified recombinant peptide produced in E. coli.

Specificity: The antibody recognizes the His-tag fused to the amino- or carboxy- termini of targeted proteins in transformed or transfected cells.

Reactivity: Reacts with Transfected cells, Transformed cells and Recombinant protein proteins

Sample	WB	IHC (F)	IHC (P)	IF	ELISA	IEM
Transformed cells	+++	ND	ND	ND	ND	ND
Transfected cells	+++	ND	ND	ND	ND	ND
Recombinant protein	+++					

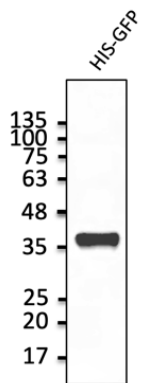
+++ excellent, ++ good, + poor, ND not determined

Usage:

WB: 1:1,000-1:5,000

Storage: Store at -20 C for long term storage. Store at 2-8 C for up to one month.

Special instructions: Avoid freeze/thaw cycles..



Anti-HIS Ab at 1/2,000 dilution; protein lysates at 50 ng per lane; chicken polyclonal to goat IgG (HRP) at 1/10,000 dilution;

For research use only, not for diagnostic use

SICGEN's Proprietary Immunogen Policy

In order to produce high specific antibodies SICGEN has invested a lot of time and effort into selecting immunogen sequences. SICGEN has decided to protect this information by not publishing it on the website. However, these sequences are available on request.