

Catalogue No.

AB0329-100

Qty:

300 µg

Anti-TMEM170A

Source: Goat

General description: Goat polyclonal antibody to TMEM170A. This protein is a transmembrane protein expressed in some tissues, located in endoplasmic reticulum membrane and nuclear envelope. It is involved in nuclear envelope organization, endoplasmic reticulum tubular network organization and nuclear pore complex assembly.

Alternative names: Transmembrane protein 170 antibody.

Form: Polyclonal antibody supplied as a 100 µl (3 mg/ml) aliquot in PBS, 20% glycerol and 0.05% sodium azide. This antibody is epitope-affinity purified from goat antiserum.

Immunogen: Peptide derived from within residues 40 aa to the N-terminus of human TMEM170A protein.

Specificity: Detects endogenous levels of TMEM170A in mouse spleen, Raw264.7, Hepa1-6 H69 and Jurkat by Western blot.

Reactivity: Reacts with Human, Rat, Mouse, Monkey and Canine proteins

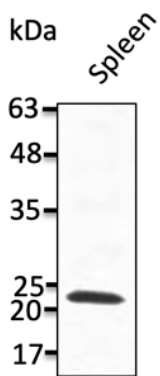
Sample	WB	IHC (F)	IHC (P)	IF	ELISA	IEM
Human	+++	ND	ND	ND	ND	ND
Rat	+++	ND	ND	ND	ND	ND
Mouse	+++	ND	ND	ND	ND	ND
Canine	+++	ND	ND	ND	ND	ND
Monkey	+++	ND	ND	ND	ND	ND

+++ excellent, ++ good, + poor, ND not determined

Usage:

Storage: Store at -20 C for long-term storage. Store at 2-8 C for up to one month.

Special instructions: Avoid freeze/thaw cycles..



Anti-TMEM170A Ab at 1/1,000 dilution; lysates at 50 μ g per lane; rabbit polyclonal to goat IgG (HRP) at 1/10,000 dilution;

For research use only, not for diagnostic use

SICGEN's Proprietary Immunogen Policy

In order to produce high specific antibodies SICGEN has invested a lot of time and effort into selecting immunogen sequences. SICGEN has decided to protect this information by not publishing it on the website. However, these sequences are available on request.