

Catalogue No.

AB0281-100

Qty:

300 µg

Anti-NPY3R

Source: Goat

General description: Goat polyclonal antibody to NPY3R. This protein is a CXC chemokine receptor specific for stromal cell-derived factor-1. The protein is located on the cell surface and it has seven transmembrane regions. It is highly expressed in breast cancer cells and acts with the CD4 protein to support HIV entry into cells.

Alternative names: FB22; HM89; LAP3; LCR1; NPYR; WHIM; CD184; LAP-3; LESTR; NPY3R; NPYRL; WHIMS; HSY3RR; NPYY3R; WHIMS1; D2S201E, antibody.

Form: Polyclonal antibody supplied as a 100 µl (3 mg/ml) aliquot in PBS, 20% glycerol and 0.05% sodium azide. This antibody is epitope-affinity purified from goat antiserum.

Immunogen: Recombinant peptide derived from within residues 310 aa to the C-terminus of human NPY3R produced in E. coli.

Specificity: Detects endogenous levels of NPY3R by Western blot. This Ab is specific for NPY3R and does not cross-react with NPY1R, NPY2R, NPY4R and NPY5R.

Reactivity: Reacts with Human, Rat, Mouse, Monkey and Canine proteins

Sample	WB	IHC (F)	IHC (P)	IF	ELISA	IEM
Human	+++	ND	ND	ND	ND	ND
Rat	+++	ND	ND	ND	ND	ND
Mouse	+++	ND	ND	ND	ND	ND
Monkey	+++	ND	ND	ND	ND	ND
Canine	+++	ND	ND	ND	ND	ND

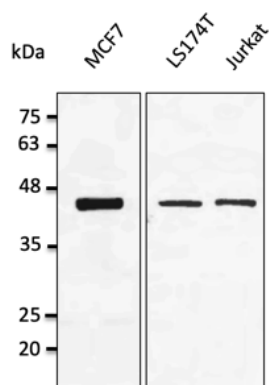
+++ excellent, ++ good, + poor, ND not determined

Usage:

WB: 1:500-1:2,000

Storage: Store at -20 C for long-term storage. Store at 2-8 C for up to one month.

Special instructions: Avoid freeze/thaw cycles..



Anti-NYP3R Ab at 1/1,000 dilution; lysates not boiled at 50 µg per lane; chicken polyclonal to goat IgY (HRP) at 1/10,000 dilution;

For research use only, not for diagnostic use

SICGEN's Proprietary Immunogen Policy

In order to produce high specific antibodies SICGEN has invested a lot of time and effort into selecting immunogen sequences. SICGEN has decided to protect this information by not publishing it on the website. However, these sequences are available on request.